

The top half of the image features a decorative background with several light brown, brush-stroke-like patterns and several white, pearl-like spheres scattered across it.

# face prep, concealers, & correctors



## SKIN SMOOTHING FACE PRIMER

A clear gel face primer that smoothes & preps skin for makeup. Key ingredients: orange oil, lemongrass oil, sesame seed oil.

### INGREDIENTS

Cyclotetrasiloxane, Cyclopentasiloxane PEG/PPG-18/18 Dimethicone, Caprylic/Capric Triglycerides, Dimethicone/Dimethicone Crosspolymer3, Octyl Palmitate, Silica, Polymethylsilsesquioxane, Isostearyl Isostearate, Boron Nitride, Cetyl PEG/PPG-10 Dimethicone, Cera Alba (beeswax), Paraffin, Phenoxyethanol, Tocopherol Acetate, Citrus Aurantium (Orange) Oil, Cymbopogon Citratus (Lemongrass) Oil, Sesamum Indicum (Sesame) Seed Oil, Lauryl Lysine

Net Weight: .50 Oz/15mL



Why your brand needs this?

If your brand offers face products then face primers are a MUST! Face primers help makeup last longer. Skin Smoothing Face Primer hydrates skin and Face Matte Primer helps reduce oil.

**CRUELTY FREE**



**MADE IN USA**



### PACKAGING

- Frosted black airless pump
- Printed with product name, just add your logo
- Ingredients printed on back

## FACE MATTE PRIMER

A 2 in 1 face primer that plumps and naturally heals skin. This priming gel reduces the appearance of oily skin and is ideal for use before makeup application. Key ingredients: aloe vera, hyaluronic acid, essential oils: lemon, lime, lemongrass, lavender, orange & peppermint.

### INGREDIENTS

Aqua (Water), Aloe Vera Gel, Glycerin, PCA, Hyaluronic Acid, Extract of: Goldenseal, Horsetail, Burdock, Arnica, Carbomer 940, Propylene Glycol, Essential Oil of Lemon, Lime, Lemongrass, Lavender, Orange & Peppermint, DMDM Hydantoin & Iodopropynyl Butylcarbamate

Net Weight: .50 Oz/15mL



**CRUELTY FREE**



**MADE IN USA**



Custom 30mL packaging also available

### PACKAGING

- Frosted black airless pump
- Printed with product name, just add your logo
- Ingredients printed on back





# Concealers & Correctors

Why your brand needs this?

Concealers are a staple item for any beauty brand!

Our concealers and correctors are very versatile and can be used to conceal, contour, highlight and correct. We offer a wide range of formulas so your brand can choose the one that best suits your customer's needs.

## PERFECT CONCEALER

*This creamy, highly pigmented concealer covers most skin imperfections and is light enough for everyday use.*

### INGREDIENTS

Ricinus Communis (Castor Oil), Caprylic/Capric Triglyceride, Ozokerite, Cera Alba (Beeswax) Copernicia Cerifera (Carnauba Wax), Palmarosa Oil, BHT, May contain: Iron Oxide, Titanium Dioxide, Ultramarines

Net Weight: .141 Oz/4g

### PACKAGING



Matte View Compact  
Ideal for logo printing



CRUELTY FREE

MADE IN USA



PC #1



PC #2



PC #3



PC #4



PC #5



PC #6



PC #7



PC #8

## BLEMISH & CAPILLARY CONCEALER

*This highly pigmented concealer covers red/pink blemishes as well as blue veins showing on the skin's surface. Key ingredients: coconut oil, sunflower seed oil, carnauba wax.*

### INGREDIENTS

Cocos Nucifera (Coconut) Oil, Helianthus Annuus (Sunflower) Seed Oil, Ozokerite, Copernicia Cerifera (Carnauba) Wax, Stearic Acid, May Contain: Iron Oxides, Titanium Dioxide, Ultramarines, Yellow #5

Net Weight: .25 Oz/7g

### PACKAGING



Matte View Jar  
Ideal for logo printing



Bundle together with our blemish spot treatment!



CRUELTY FREE

MADE IN USA



## CAMOUFLAGE COVER CREME

Full-coverage concealer with doe-foot applicator for easy application.

### INGREDIENTS

Water (Aqua), Glycerin, Stearic Acid, Glyceryl Stearate ES, Caprylic/Capric Triglyceride, Isostearyl Neopentanoate, Magnesium Aluminum Silicate, Tocopheryl Acetate, Xanthan Gum, Silica, Dimethicone, Sodium Benzoate, Phenoxyethanol, May contain: Mica, Titanium Dioxide, Iron Oxides  
Net Weight: .17 Oz./5g

### PACKAGING

Round Clear Tube - Ideal for logo printing



**CRUELTY FREE**

**MADE IN USA**



### Color Library

Minimum required for Color Library Shades. Please contact your Brand Consultant for more information.

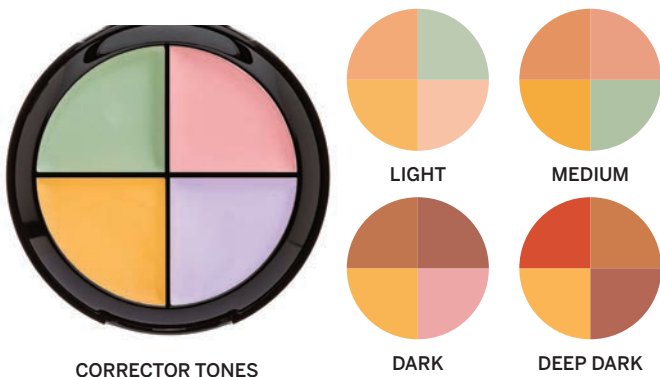


## Color Library CORRECTORS

Minimum required for Color Library Shades. Please contact your Brand Consultant for more information.

### CORRECTOR QUADS

Don't just cover your imperfections, correct them with this lightweight, non-drying concealer wheel. Corrector Quad neutralizes most skin problems including: dark circles, sallowness, blemishes, and broken blood vessels.



### COLOR CORRECTING PRIMER

A long-wearing, buildable liquid color correcting primer. Key ingredients: sesame seed oil, avocado extract, jojoba seed oil, shea butter.



custom packaging options available



## MINERAL CONCEALER

*A creamy, mineral concealer with buildable coverage. Water-based formula with anti-oxidant Vitamin C, natural mineral colorants and wand applicator.*

**INGREDIENTS** Water (Aqua), Glycerin, Stearic Acid, Glyceryl Stearate ES, Caprylic/Capric Triglyceride, Isostearyl Neopentanoate, Magnesium Aluminum Silicate, Tocopheryl Acetate, Xanthan Gum, Silica, Dimethicone, Sodium Benzoate, Phenoxyethanol, May contain: Mica, Titanium Dioxide, Iron Oxides  
Net Weight: .17 Oz./5g

**PACKAGING** Leo tube | Ideal for logo printing



BISQUE BEIGE  
#2



CAMEL BEIGE  
#3



ALMOND BEIGE  
#4



**CRUELTY  
FREE**

**MADE  
IN USA**



## BAKED MINERAL TRIAGE

*A special blend of colors that will even out any skin tone, neutralize redness, and even brighten the appearance of sallow skin! This product starts as a cream and is baked for 24 hours on a terracotta pan, creating a dome shape, and an unparalleled silky texture. This oil absorbing corrector is easy to apply and is great for men and women.*

**INGREDIENTS** Mica, Sericite Mica, Simmondsia Chinensis (Jojoba) Seed Oil, Carthamus Tinctorius (Safflower) Seed Oil, Thymus Vulgaris (Thyme) Extract, Camellia Sinensis (Green Tea) Extract, Tocopheryl Acetate, Rosmarinus Officinalis (Rosemary) Leaf Extract, Iron Oxides  
Net Weight: .32 Oz./9g

**PACKAGING** Matte View Compact | Ideal for logo printing



**CRUELTY  
FREE**

**MADE  
IN USA**



**Grafton**  
PRIVATE LABEL COSMETICS

*Boss Babe*

*Boss Babe*

# foundations

liquid, powder & cream

*Boss Babe*

*Boss Babe*

*let's face it,  
you're ready to  
build your  
beauty  
brand!*





# Pro Finish Foundation

*Why your brand needs this?*  
Your customers will love this 2-in-1 foundation!  
This medium to full-coverage formula can be used wet for more coverage or dry for a lighter, more natural look.

**A dual powder foundation that can be used wet or dry.  
Breathable, blendable, oil-absorbing, and contains anti-oxidant Vitamin E.**

## INGREDIENTS

Talc, Silica, Isostearyl Palmitate, Squalane, Dimethicone, Lauroyl Lysine, Propylene Glycol, Imidazolidinyl Urea, Tocopheryl Acetate (Vitamin E), Ascorbyl Palmitate (Vitamin C), Titanium Dioxide, May Contain: Iron Oxide, Ultramarines, Chromium Oxide, Manganese Violet  
Net Weight: .317 Oz/9g

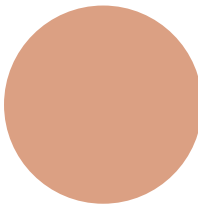
**CRUELTY FREE**



**MADE IN USA**



## PACKAGING OPTIONS



Pan only in clam shell



Matte black compact with sponge  
Ideal for logo printing



CANVAS



CHINA DOLL



IVORY



CASHMERE



NEUTRAL BEIGE



BAMBOO



HONEY



HAZELNUT



CINNAMON



PECAN

## Color Library

Minimum required for Color Library Shades. Please contact your Brand Consultant for more information



SOFT BEIGE



GOLDEN BEIGE



CARMEL



MAPLE SUGAR



CAFE AU LAIT



# Pressed Mineral Foundation

A pressed powder foundation formulated with natural light-refracting minerals; this foundation will diminish the appearance of fine lines and help protect the skin from harmful UVA/UVB rays. Key ingredients: Vitamin C, Vitamin E, natural minerals.

## INGREDIENTS

Mica, Silica, Dimethicone, Zinc Oxide, Ascorbyl Palmitate (Vitamin C), Tocopherol Acetate (Vitamin E), May Contain: Iron Oxides, Titanium Dioxide, Ultramarines  
Net Weight: .353 Oz/10g



Why your brand needs this?  
This medium to full-coverage, mineral-based foundation is filled with antioxidants and is great for sensitive skin.



## PACKAGING

Matte black compact with sponge  
Ideal for logo printing

**CRUELTY FREE**  
**MADE IN USA**



LIGHT PORCELAIN



NUDE



BARE BEIGE



CREME BRULEE



BISQUE



CHINA BEIGE



SUNTAN



TRUE BEIGE



LINEN



BUTTERY BEIGE



WHEAT



DARK TAN



PINEWOOD



TOAST



CASHEW



BARK



COFFEE





# Baked Mineral Colour Tones Foundation

Our colour tones start as a cream and are baked for 24 hours on a terracotta pan, creating a dome shape, and an unparalleled silky and soft texture for a more breathable and blendable foundation. Formulated with natural botanical extracts for added soothing and anti-inflammatory properties.

*Why your brand needs this?*  
An innovative formula with light-refracting technology that allows each color to adjust to an individual's skin tone. Your customers will love this medium to full-coverage, buildable formula that helps neutralize skin's imperfections.

## INGREDIENTS

Mica, Sericite Mica, Simmondsia Chinensis (Jojoba) Seed Oil, Lavandula Angustifolia (Lavender) Flower Extract, Thymus Vulgaris (Thyme) Extract, Camellia Sinensis (Green Tea) Extract, Tocopheryl Acetate, Rosmarinus Officinalis (Rosemary) Leaf Extract, Iron Oxide

Net Weight: .32 Oz./9g

## PACKAGING OPTIONS



Pan only in clam shell



Matte View Compact  
Ideal for logo printing



**CRUELTY FREE**



ANTIQUÉ BEIGE



DOVER BEIGE



MEGA BEIGE



SIMPLY BEIGE



TRANQUIL BEIGE



WARM CARAMEL



MOROCCAN BEIGE



# Perfect Matte Foundation

*Why your brand needs this?*  
This full-coverage, liquid foundation formula is great for oily to normal skin types. It blends easily and leaves skin with a matte finish.

**A long-wearing, buildable, liquid foundation that leaves a matte finish and helps even out skin's complexion. Key ingredients: sesame seed oil, avocado extract, aloe vera, jojoba seed oil, shea butter.**

## INGREDIENTS

Water, Sesamum Indicum (Sesame) Seed Oil, Sorbitol, Persea Gratissima (Avocado) Fruit Extract, Aloe Barbadensis Leaf Extract, Simmondsia Chinensis (Jojoba) Seed Oil, Glycerin, Cetearyl Alcohol, Butyrospermum Parkii (Shea Butter), Lecithin, Silica, Xanthan Gum, Phenoxyethanol, Kaolin, Potassium Sorbate. May Contain: Iron Oxide (CI 77491, CI 77492, CI 77499), Titanium Dioxide (CI 77891)  
Net Weight: .50 Oz/15mL



## PACKAGING

Black Toggle bottle - Ideal for adding a label  
Comes boxed, includes shade label with room to add your label

**CRUELTY FREE**

**MADE IN USA**



Ask your Brand Consultant about our NEW black packaging



PORCELAIN



NATURAL BEIGE



TRUE BEIGE



BUTTER BEIGE



SUNTOUCHED BEIGE



CLASSIC BEIGE



CARAMEL CREME



RICH CARAMEL



DEEP BEIGE



ALMOND



SIMPLY SIERRA



WALNUT



BRONZED BEAUTY



SUEDE



ESPRESSO





# Skin Perfecting Foundation

*Why your brand needs this?*  
This unique, medium-coverage liquid foundation offers a skin treatment & color all in one! Infused with hydrating ingredients and hyaluronic acid to reduce the appearance of fine lines, your customers will love this soothing foundation formula.

**A medium coverage foundation with lifting, tightening, and hydrating properties.**

## INGREDIENTS

Deionized Water (Aqua) Cyclopentasiloxane, Lauryl PEG-8 Dimethicone, Bis-Hydroxyethoxypropyl Dimethicone, Polymethyl Methacrylate, Butylene Glycol, Ethylhexyl Methoxycinnamate, Ethylhexyl Salicylate, Dimethicone, Titanium Dioxide, Polyglyceryl-4 Isostearate, Disteardimonium Hectoriate, Sodium Chloride, Dimethicone/Vinyl Dimethicone Crosspolymer, Phenoxyethanol, Silica, Propylene Carbonate, Sodium Dehydroacetate, Polysilicone-11, Methicone, Nylon-12 Fluorescent Brightener 230 Salt, Sodium Hyaluronate, Disodium EDTA, Persea Gratissima (Avocado) Oil, Prunus Armeniaca (Apricot) Kernel Oil, Avena Sativa (Oat) Kernel Extract, Pullulan, Polyvinylalcohol Crosspolymer, Algae Extract, Talc, Potassium Sorbate, Ethylhexylglycerin, May Contain: Mica, Iron Oxides, Titanium Dioxide  
Net Weight: .50 Oz/15mL

**CRUELTY FREE**

**MADE IN USA**



## PACKAGING

Frosted black airless pump  
Ideal for logo printing  
Ingredients printed on back



#1



#2



#3



#4



#5



#6

*on sale!*



#7

*on sale!*

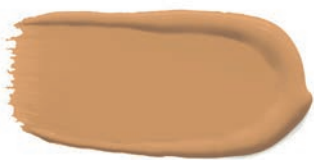


#8



#9

*on sale!*



#10

*on sale!*



#11

*on sale!*



#12



# Picture Perfect Foundation

*Why your brand needs this?*  
Your customers will love their new picture perfect appearance with this full-coverage, water resistant formula!

*A creamy, full coverage formula for effortless application that stays in place all day. Get picture perfect ready! Key ingredients: coconut oil, sunflower seed oil, carnauba wax, palmarosa oil.*

## INGREDIENTS

Cocos Nucifera (Coconut) Oil, Helianthus Annuus (Sunflower) Seed Oil, Ozokerite, Copernicia Cerifera (Carnauba) Wax, Stearic Acid, Palmarosa Oil, May contain: Iron Oxides, Titanium Dioxide, Mica, Ultramarine

Net Weight: .35 Oz/10g

## PACKAGING



Matte View Compact  
Ideal for logo printing



**CRUELTY FREE**

**MADE IN USA**



ALABASTER



BONE



WHIPPED CREAM



FRESCO OLIVE



VIRTUAL OLIVE



LUMIERE OLIVE



SAND OLIVE



SHEER TAN



VEIL OLIVE



PECAN



WALNUT





# Flawless Finish Foundation

*Why your brand needs this?*  
Your customers will love this full-coverage, oil-absorbing cream foundation that will leave their skin with a flawless finish!

*A cream-to-powder foundation. Full-coverage formula with oil absorbing nylon-12 for a lightweight and breathable feel.*

## INGREDIENTS

Hydrogenated Polyisobutenes, Octyl Palmitate, Nylon-12, Microcrystalline Wax, Decyl Oleate, Copernicia Cerifera (Carnauba) Wax, Isopropyl Lanolate, Dimethicone, Mica, Octyl Methoxycinnamate, Rosa Canina (Rose Hip) Seed Oil, BHA, May Contain: Iron Oxides, Titanium Dioxide, Ultramarine Blue, Chromium Green, Talc

Net Weight: .35 Oz/10g

## PACKAGING

Matte black compact with sponge  
Ideal for logo printing



**CRUELTY FREE**



**MADE IN USA**



FRENCH VANILLA



LATTE



LINEN



COFFEE-N-CREAM



CLASSIC BEIGE



ICED COFFEE



TOAST



FRENCH ROASTED



COLOMBIAN COFFEE



ALMOND



ESPRESSO

The top half of the image features four horizontal swatches of cosmetic powder in various shades of beige and tan. To the right, a black-handled brush with grey bristles is shown with a pile of powder on its tip. The background is white with some scattered powder particles.

# loose & pressed powders



**Grafton**  
PRIVATE LABEL COSMETICS





# Translucent Loose Powder

A lightweight loose powder that blends effortlessly to set makeup for hours.  
Made from minerals, helps absorb oil from the skin to keep the skin looking matte.

**INGREDIENTS** Talc, Zinc Stearate, Kaolin, Magnesium Carbonate, Sodium Benzoate, May contain: Iron Oxide, Titanium Dioxide, Ultramarine  
Net Weight: .75 Oz/21g

*Why your brand needs this?*  
A must-have product to set makeup in place for hours!



**PACKAGING**  
Matte black cap sifter jar  
Ideal for logo printing



**CRUELTY FREE**  
**MADE IN USA**



0 - NO SHINE	1 - LIGHT BEIGE	2 - MEDIUM BEIGE	3 - DEEP BEIGE <i>on sale!</i>
4 - TRUE BEIGE	5 - BUTTERNUT BEIGE <i>on sale!</i>	6 - WARM BEIGE	7 - ALMOND <i>on sale!</i>
8 - WALNUT	9 - GINGERBREAD	10 - WARM CARAMEL	11 - RICH JAVA



# Mineral HD Setting Powder

## MINERAL HD LOOSE SETTING POWDER

*An incredibly fine powder that gives skin a smooth finish. The light refracting properties even out skin tone and reduce the appearance of fine lines.*

**INGREDIENTS** Silica, Matricaria Recutita (Chamomile Flower) Powder  
Net Weight: 0.67 Oz/19g



### PACKAGING

Matte black cap  
sifter jar  
Ideal for logo  
printing



**CRUELTY  
FREE**

**MADE  
IN USA**



*Why your brand  
needs this?*

This is the perfect add-on product for your brand to offer! Choose from our weightless loose or pressed setting powders.

## MINERAL HD PRESSED SETTING POWDER

*A light refracting pressed powder that absorbs oil and reduces the appearance of fine lines.*

**INGREDIENTS** Silica, Laurel Lysine, Polymethylsilsesquioxane, Isostearyl Palmitate, Vegetable Squalane, Phenoxyethanol, Dimethicone  
Net Weight: .28 Oz/8.0g

### PACKAGING OPTIONS



Pan only in  
clam shell



Matte View  
Compact  
Ideal for logo  
printing



**CRUELTY  
FREE**

**MADE  
IN USA**





Grafton  
PRIVATE LABEL COSMETICS

*ready set  
glow!*

**highlight &  
contour**



## BAKED MINERAL HIGHLIGHTERS

*Our baked mineral highlighters start as a cream and are baked for 24 hours on a terracotta pan, creating a dome shape, and an unparalleled silky texture to give you a gorgeous, natural looking glow! Natural colorants and natural botanical extracts.*

*Why your brand needs this?*

Highlighters are a **MUST** right now in the beauty industry! Choose from our wide selection of formulas to pick which highlighter best fits your brand's vision.

### INGREDIENTS

Mica, Sericite Mica, Simmondsia Chinensis (Jojoba) Seed Oil, Lavandula Angustifolia (Lavender) Flower Extract, Thymus Vulgaris (Thyme) Extract, Camellia Sinensis (Green Tea) Extract, Rosmarinus Officinalis (Rosemary) Leaf Extract, Iron Oxide

Net Weight: .32 Oz/9 g

### PACKAGING OPTIONS



Pan only in clam shell



Matte View Compact  
Ideal for logo printing



**CRUELTY FREE**



LIVE IN THE  
GLOWMENT



SHINE BRIGHT  
LIKE A...



DIAMONDS  
& ROSES



*Why your brand needs this?*

Great for building awareness for your brand with the large, sleek front of the palette just waiting to have your logo/design printed by our team.

## POWDER CONTOUR KIT

6-pan kit filled with lightweight, easy-to-blend, pressed powders for the perfect highlight and contour!

### INGREDIENTS

Mica, Zinc Stearate, Octyl Palmitate, Cyclomethicone, Citrus Aurantium (Orange) Oil, Cymbopogon Citratus (Lemon Grass) Oil, Sesamun Indicum (Sesame) Oil, May Contain: Iron Oxide, Titanium Dioxide, Ultramarines, Manganese Violet

Net Weight: 1.02 Oz /30g



LIGHT



DARK



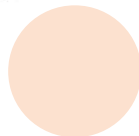
**CRUELTY FREE**



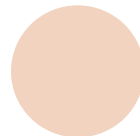
**MADE IN USA**



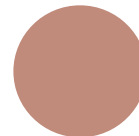
BANANA



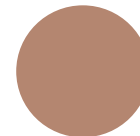
VANILLA



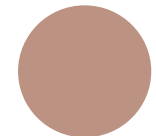
SAND



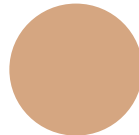
NUTMEG



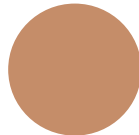
FAWN



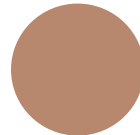
OAK



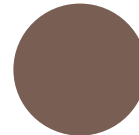
FAWN



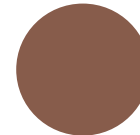
JAVA



TRUFFLE



COCOA



CINNAMON



ESPRESSO

## STROBE AND GLOW KIT

6-pan kit filled with lightweight, easy-to-blend, pressed powders for the ultimate luminous effect! Shades can be used for highlighting the eyes, face, lips and body.

### INGREDIENTS

Mica, Zinc Stearate, Octyl Palmitate, Cyclomethicone, Citrus Aurantium (Orange) Oil, Cymbopogon Citratus (Lemon Grass) Oil, Sesamun Indicum (Sesame) Oil, May Contain: Iron Oxide, Titanium Dioxide, Ultramarines, Manganese Violet

Net Weight: 1.02 Oz /30g



BRONZE GLOW



EVENING GLOW



MOON GLOW



NATURAL GLOW



STARLIGHT GLOW



SUN GLOW



**CRUELTY FREE**

**MADE IN USA**



- Filled with pre-selected highlighter shades
- Palette available empty
- Refillable pans available separately

*Why your brand needs this?*

Bronzed skin is always in!  
Select from our mineral, pressed, or loose bronzer formulas to add to your beauty brand.

## NATURAL RADIANCE BRONZER

*This formula is developed to self-adjust to skin tones to create a smooth, flawless natural bronze glow! Enriched with antioxidants. No caking or settling in fine lines or wrinkles. Breathable, buildable, blendable formula!*

**INGREDIENTS** Mica, Sericite Mica, Simmondsia Chinensis (Jojoba) Seed Oil, Lavandula Angustifolia (Lavender) Flower Extract, Thymus Vulgaris (Thyme) Extract, Camellia Sinensis (Green Tea) Extract, Tocopheryl Acetate, Rosmarinus Officinalis (Rosemary) Leaf Extract, Iron Oxide

Net Weight: .32 Oz./9g

### PACKAGING OPTIONS



Pan only in clam shell



Matte View Compact  
Ideal for logo printing



**CRUELTY FREE**

## PRESSED POWDER BRONZER

*Pressed powder bronzer that can be used on the face and body.*

**INGREDIENTS** Talc, Zinc Stearate, Octyl Palmitate, Cyclomethicone, Phenoxyethanol, May contain: Iron Oxides, Ultramarines

Net Weight: .4 Oz/11g



BRONZEBERRY  
*on sale!*

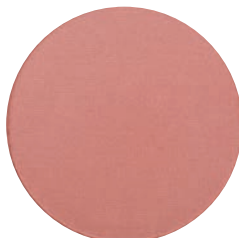


GOLDEN GLOW  
*on sale!*



TROPICAL TAN

### PACKAGING OPTIONS



Pan only in clam shell



Matte View Compact  
Ideal for logo printing



**CRUELTY FREE**  
**MADE IN USA**

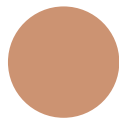


# FACE & BODY GLO

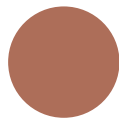
*Loose shimmering bronzer can be used on the face or body for a natural, sunkissed glow!*

**INGREDIENTS** Mica, Zinc Stearate, Magnesium Carbonate, Iron Oxide

Net Weight:  
full size: .75 Oz/21g  
mini: .32 Oz/9g



GOLDEN PATINA



BERRY PATINA



**CRUELTY  
FREE**

**MADE  
IN USA**

## PACKAGING



### MINI

Silver cap mini sifter jar  
Ideal for logo printing



### REGULAR SIZE

Matte black cap sifter jar  
Ideal for logo printing



eye  
shadows,  
palettes,  
& more



Grafton  
PRIVATE LABEL COSMETICS



## EYE FIX

*An eye shadow primer in a cream formula. Keeps shadows from creasing, makes colors more vibrant and improves wearability.*

### INGREDIENTS

Cera Alba (Beeswax) , Simmondsia Chinensis (Jojoba) Seed Oil, Euphorbia Cerifera (Candelilla) Wax, Propylene Carbonate, Titanium Dioxide, Kaolin, Yellow #5, Iron Oxide  
Net Weight: .20 Oz./5.6g

### PACKAGING



Matte View Compact  
Ideal for logo printing



**CRUELTY FREE**



**MADE IN USA**



EYE FIX ORIGINAL



EYE FIX BEIGE

*Why your brand needs this?*

*Eye shadow primers are a MUST before any eye shadow application. This is the perfect add-on item to go with any eye shadow for your brand!*

## ANTIOXIDANT EYE BASE

*A neutral eye base primer. A cream-to-powder eye shadow primer that holds shadow in place, while neutralizing the eyelid to show true shadow color; infused with anti-oxidant: Vitamin E.*

### INGREDIENTS

Caprylic/Capric Triglyceride, Cyclomethicone, PPG-2 Myristyl Ether Propionate, C12-15 Alkyl Benzoate, Talc, Silica, Nylon 6, Isopropyl Titanium Triisostearate, Cera Alba (Beeswax), Tribehenin, Stearic Acid, Ascorbic Acid, Tocopheryl Acetate, BHA, Titanium Dioxide, Iron Oxide, Mica

Net Weight: .25 Oz/7g



**CRUELTY FREE**



**MADE IN USA**



*Why your brand needs this?*  
Eye Shadows are a staple item in any beauty brand! Create your brand's identity by selecting shades that are trending, everyday essentials, or seasonal musts.

A triple milled, pressed eye shadow available in over two hundred shades.

**INGREDIENTS**

Talc, octyl palmitate, cyclomethicone, zinc stearate, phenoxyethanol, sodium benzoate. May contain: mica, iron oxide, manganese violet, titanium dioxide, red 40 lake, yellow #5, blue #1, ultramarines, chromium green

Net Weight: .052/1.48g

**PACKAGING OPTIONS**



Pan only in clam shell, or can be assembled in palettes



Matte View Compact  
Ideal for logo printing



**CRUELTY FREE** | **MADE IN USA**



#350 | CLOUD  
Metallic icy white



#86 | SNOW WHITE  
Matte pure white



#111 | VANILLA ICE  
Cool matte cream



#176 | CRÈME  
Light matte cream



#113 | PEACH ICE  
Matte peachy cream



#351 | PEACH PLEASE  
Matte cream



#166 | BISQUE  
Warm light beige gold



#300 | PROSECCO  
Light pink champagne



#56 | WHITE GOLD  
Shimmery white gold



#352 | LINEN  
Icy shimmery white



#353 | BLISS  
Shimmery light nude



#354 | DIVINE  
Soft light cream



#355 | VINTAGE  
Matte golden beige



#323 | CREAMY BEIGE  
Light beige



#356 | DREAMER  
Matte creamy white



#319 | NATURAL ENVY  
Matte tweed



#130 | MAHOGANY  
Medium neutral brown



#321 | WINTER BROWN  
Matte medium camel brown



#292 | SUGAR BLUSH  
Pale pink with gold glitter



#52 | PEACHES & CREAM  
Light peach



#127 | SERENE  
Medium peachy brown



#110 | BABY BROWN  
Light peachy brown



#150 | BACK TO EARTH  
Pearly grey taupe



#236 | TREASURE CHEST  
Cool mauvey matte brown



#112 | PINK ICE  
Pearly light peachy pink



#232 | PILLOW TALK  
Light shimmery pink



#336 | DAZZLELIGHT  
High frost white, pink hue



#289 | EARTHLY NUDE  
Matte plummy taupe



#119 | ROSE QUARTZ  
Matte muted mauve



#324 | SABLE  
Matte medium tweed



*Why your brand needs this?*  
Eye Shadows are a staple item in any beauty brand! Create your brand's identity by selecting shades that are trending, everyday essentials, or seasonal musts.

A triple milled, pressed eye shadow available in over two hundred shades.

**INGREDIENTS**

Talc, octyl palmitate, cyclomethicone, zinc stearate, phenoxyethanol, sodium benzoate. May contain: mica, iron oxide, manganese violet, titanium dioxide, red 40 lake, yellow #5, blue #1, ultramarines, chromium green

Net Weight: .052/1.48g

**PACKAGING OPTIONS**



Pan only in clam shell, or can be assembled in palettes



Matte View Compact  
Ideal for logo printing



**CRUELTY FREE**

**MADE IN USA**



#348 | GLISTENING  
Shimmery light purple



#357 | GODDESS  
Metallic lavender



#212 | VINEYARD  
Deep muted purple, silver flecks



#274 | MAGNETIC  
Medium lilac, glitter flecks



#358 | SPRING FLING  
Purple with glitter



#332 | SMOKED PURPLE  
Smoky purple



#258 | FREESTONE  
Matte eggplant



#359 | GILDED PLUM  
Deep plum, gold shimmer



#342 | LEGEND  
Matte deep charcoal purple



#229 | NAUGHTY  
Shimmery deep eggplant



#327 | NIGHT FALL  
Black base, copper glitter



#360 | GLAMOUR  
Shimmery berry brown



#252 | LOLITA  
Medium shimmery fuschia



#206 | FLIRTATIONS  
Light pink with gold flecks



#234 | TRUE ROMANCE  
Medium cool brown



#106 | SMOKEY PLUM  
Shimmery chocolate bronze



#361 | OPTIMISTIC  
Shimmery cranberry plum



#314 | SPIKED PUNCH  
Muted dusty mauve, gold flecks



#362 | SUEDE  
Medium mauvy brown, hint of shimmer



#85 | PLEASANTLY PLUM  
Matte muted brown red



#290 | EARTHLY WINE  
Matte muted cranberry



#326 | RED EARTH  
Matte deep red brown



#118 | PEBBLE  
Rich brick brown



#161 | PURE SABLE  
Deep shimmery copper



#27 | TOFFEE  
Medium chocolate, yellow undertone



#128 | CHOCOLATE KISSES  
Chocolate with silver flecks



#28 | GOLDEN BRONZE  
Shimmery bronze gold



#26 | COFFEE  
Medium chocolate warm



#29 | SMOKE  
Matte chocolate brown



#383 | METAL MAUVE  
Medium smoky purple

*Why your brand needs this?*  
Eye Shadows are a staple item in any beauty brand! Create your brand's identity by selecting shades that are trending, everyday essentials, or seasonal musts.

A triple milled, pressed eye shadow available in over two hundred shades.

**INGREDIENTS**

Talc, octyl palmitate, cyclomethicone, zinc stearate, phenoxyethanol, sodium benzoate. May contain: mica, iron oxide, manganese violet, titanium dioxide, red 40 lake, yellow #5, blue #1, ultramarines, chromium green

Net Weight: .052/1.48g

**PACKAGING OPTIONS**



Pan only in clam shell, or can be assembled in palettes



Matte View Compact  
Ideal for logo printing



**CRUELTY FREE**

**MADE IN USA**



#320 | TUSCANY  
Matte cool chocolate brown



#322 | DEEPLY RICH  
Matte cool deep brown



#315 | TWEED  
Matte smoky brown



#329 | SIENNA  
Shimmery medium warm taupe



#299 | TENDER TAUPE  
Matte medium taupey grey



#104 | CHOCOLATE BROWN  
Deep cool matte chocolate



#363 | WONDERER  
Metallic champagne



#134 | ICED MALTED  
Shimmery silvery taupe



#24 | CHARCOAL GREY  
Deep matte charcoal



#279 | BLACKEST BLACK  
Pure black with silver flecks



#288 | SMOLDER  
Black base, silver + blue glitter



#287 | SAPPHIRE NIGHT  
Black base, sapphire glitter



#55 | DEEP SEA BLUE  
Deep matte navy



#364 | ROYALTY  
Metallic deep periwinkle



#163 | BLUESTONE  
Shimmery gun metal grey



#60 | PEARL GREY  
Shimmery light grey



#365 | STEEL  
Shimmery grey blue



#366 | SOULFUL BLUE  
Shimmery deep royal blue



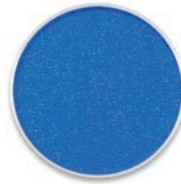
#199 | AQUAMARINE  
Matte cornflower blue



#367 | BLUE SKIES  
Matte cornflower blue



#368 | BLUEBELL  
Matte muted med. blue, hint of glitter



#369 | FREE SPIRIT  
Electric blue, hint of glitter



#246 | DRAMA QUEEN  
Shimmery bright teal



#370 | WHIMSICAL  
Bright teal, hint of glitter



#40 | SAND 'n' SURF  
Light cool cream



#286 | JUNGLE  
Black base, green glitter



#116 | SPANISH MOSS  
Matte forest green



#371 | FOREST  
Shimmery forest green



#349 | VINTAGE FOREST  
Shimmery light olive green



#228 | SHITAKE  
Light taupey grey, glitter flecks



*Why your brand needs this?*  
Eye Shadows are a staple item in any beauty brand! Create your brand's identity by selecting shades that are trending, everyday essentials, or seasonal musts.

A triple milled, pressed eye shadow available in over two hundred shades.

**INGREDIENTS**

Talc, octyl palmitate, cyclomethicone, zinc stearate, phenoxyethanol, sodium benzoate. May contain: mica, iron oxide, manganese violet, titanium dioxide, red 40 lake, yellow #5, blue #1, ultramarines, chromium green

Net Weight: .052/1.48g

**PACKAGING OPTIONS**



Pan only in clam shell, or can be assembled in palettes



Matte View Compact  
Ideal for logo printing



**CRUELTY FREE**

**MADE IN USA**



#337 | **CHARMED**  
Metallic champagne gold



#37 | **OYSTER PEARL**  
Shimmery rose gold



#181 | **GINGER SNAPS**  
Medium shimmer champagne



#372 | **BRONZE GLOW**  
Metallic copper



#373 | **COMET**  
Medium tone diffused orange



#164 | **CAMEL**  
Light yellow brown



#374 | **HOLLYWOOD**  
Warm medium shimmery brown



#375 | **CITRUS**  
Shimmery light orange



#249 | **PEACH KISS**  
Shimmery baby peach



#345 | **LAGUNA**  
Matte bright peach



#376 | **APRICOT CRUSH**  
Shimmery peachy pink



#210 | **AUTUMN**  
Matte rosy peach



#341 | **DUSK**  
Matte medium camel



#257 | **BRAZILIAN BRONZE**  
Super shimmery sunset gold



#177 | **GOLDILOCKS**  
Shimmery copper gold



#281 | **CARAMEL APPLES**  
Shimmery cool bronzy gold



#331 | **OCEAN AVE**  
Frosted light peach



#377 | **BUTTERFLIES**  
Light shimmery yellow gold



#225 | **BURNT ORANGE**  
Bright burnt orange



#333 | **BLOOD ORANGE**  
Deep orange red



#243 | **RED FOR REAL**  
Bright orange red



#221 | **YELLOW**  
Bright pure sunshine yellow



#378 | **INSPIRE**  
Metallic yellow gold



#318 | **BUTTERCUP**  
Matte pale yellow



#382 | **METAL LITE BRONZE**  
Shimmery light bronze



#385 | **METAL TAUPE**  
Soft light gray, touch of brown



#384 | **METAL PEACH**  
Warm light orange, hint of pink



#380 | **GOLD METAL**  
Warm iridescent yellow



#379 | **METAL PINK**  
Light dusty pink



#41 | **CREAM DUST**  
Sheer pearly cream

• Minimum required for Color Library Shades, please contact your Brand Consultant for more information •



# Color Library

## EYE SHADOW

*Why your brand needs this?*  
 Eye Shadows are a staple item in any beauty brand! Create your brand's identity by selecting shades that are trending, everyday essentials, or seasonal musts.

A triple milled, pressed eye shadow available in over two hundred shades.

### INGREDIENTS

Talc, octyl palmitate, cyclomethicone, zinc stearate, phenoxyethanol, sodium benzoate. May contain: mica, iron oxide, manganese violet, titanium dioxide, red 40 lake, yellow #5, blue #1, ultramarines, chromium green

Net Weight: .052/1.48g

### PACKAGING OPTIONS



Pan only in clam shell, or can be assembled in palettes



Matte View Compact  
 Ideal for logo printing



CRUELTY FREE

MADE IN USA



#167   CLOUD NINE Shimmery icy white	#196   ICED OPAL Shimmery white, blue shift	#265   SUMMER SKY Shimmery white, pink shift	#284   WHITE SWAN Matte grey cream	#285   VINTAGE WEDDING Sheer pearly cream	
#250   CRUSH ON YOU Frosted sheer ballerina pink	#195   PINK FROST Pink with gold flecks	#198   BISQUE PINK Matte pale bubble gum pink	#61   CRYSTAL PINK Pearly pale pink	#277   NEW MOON Shimmery light lilac	#172   DEWDROP Shimmery light lilac mauve
#180   ROYAL PURPLE Frosted smoky purple	#11   DEEP PLUM Muted shimmery plum	#308   PLUM SPLENDOR Shimmery violet, silver flecks	#168   ULTRA VIOLET Frosted light violet	#242   PLAYFUL Frosted bright violet	#94   NEARLY TAUPE Shimmery plummy taupe
#152   GRAVITY Frosted ash grey, purple hue	#291   EARTHLY PLUM Matte medium purple charcoal	#256   STEEL PLUM Shimmery plum grey	#171   PLUMMET Shimmery plum grey, silver flecks	#132   MIDNIGHT ORCHID Shimmery muted deep purple	#219   JEZEBEL Metallic medium taupe brown
#276   ECLIPSE Shimmery blue lavender	#222   PURE PURPLE Shimmery lavender purple	#347   BELLA Medium purple, rainbow glitter flecks	#245   POLARIZING PURPLE Bright violet, silver flecks	#346   RODEO DRIVE Matte electric purple	



• Minimum required for Color Library Shades, please contact your Brand Consultant for more information •



# Color Library

## EYE SHADOW

*Why your brand needs this?*  
 Eye Shadows are a staple item in any beauty brand! Create your brand's identity by selecting shades that are trending, everyday essentials, or seasonal musts.

A triple milled, pressed eye shadow available in over two hundred shades.

### INGREDIENTS

Talc, octyl palmitate, cyclomethicone, zinc stearate, phenoxyethanol, sodium benzoate. May contain: mica, iron oxide, manganese violet, titanium dioxide, red 40 lake, yellow #5, blue #1, ultramarines, chromium green

Net Weight: .052/1.48g

### PACKAGING OPTIONS



Pan only in clam shell, or can be assembled in palettes



Matte View Compact  
 Ideal for logo printing



**CRUELTY FREE** | **MADE IN USA**



#140 | MAUVE VELVET  
 Frosted dusty mauve



METAL LAVENDER  
 Shimmery lavender



#200 | PLUM VELVET  
 Shimmery cranberry plum



#192 | MAROONED  
 Shimmery deep plum



#316 | MAGNIFICENT PLUM  
 Shimmery deep eggplant



#269 | TWINKLE PLUM  
 Deep purple, silver flecks



#282 | PRECIOUS GEM  
 Shimmery deep plum, silver flecks



#304 | POMEGRANATE  
 Burgundy with silver flecks



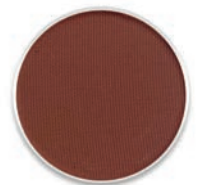
#343 | WISTERIA  
 Shimmery rosy purple



#117 | BERRY WOOD  
 Matte brick red



#339 | SCANDALOUS  
 Matte deep burgundy



#96 | SHIMMERING WINE  
 Matte brownish red



#254 | COPPER GLAZE  
 Metallic bright copper



#239 | SUN GOLD  
 Shimmery tangerine orange



#306 | MANGO MIST  
 Tangerine orange, gold flecks



#244 | OH MY ORANGE  
 Bright orange, glitter flecks



#189 | TERRACOTTA GOLD  
 Shimmery terra cotta



#183 | PEACH SCHNAPPS  
 Sheer nude with gold flecks



#82 | 14K GOLD  
 Shimmery pale yellow gold



#271 | UNMELLOW YELLOW  
 Shimmery light yellow gold



#158 | GOLDENROD  
 Shimmery pale yellow green



#334 | GOLD RUSH  
 Pure yellow gold



#338 | FAIRY DUST  
 Metallic yellow gold



#105 | CURRY  
 Shimmery mustard yellow gold



#335 | WILLOW  
 Matte light burnt orange



#105 | CURRY  
 Rusty medium brown



#247 | TANGELO  
 Frosted peach



#305 | VIOLA  
 Medium violet, gold flecks

• Minimum required for Color Library Shades, please contact your Brand Consultant for more information •



# Color Library

## EYE SHADOW

*Why your brand needs this?*  
 Eye Shadows are a staple item in any beauty brand! Create your brand's identity by selecting shades that are trending, everyday essentials, or seasonal musts.

A triple milled, pressed eye shadow available in over two hundred shades.

### INGREDIENTS

Talc, octyl palmitate, cyclomethicone, zinc stearate, phenoxyethanol, sodium benzoate. May contain: mica, iron oxide, manganese violet, titanium dioxide, red 40 lake, yellow #5, blue #1, ultramarines, chromium green

Net Weight: .052/1.48g

### PACKAGING OPTIONS



Pan only in clam shell, or can be assembled in palettes



Matte View Compact  
 Ideal for logo printing



**CRUELTY FREE** | **MADE IN USA**



					
<b>#129   FRENCH VANILLA</b> Matte nude	<b>#182   TUMBLEWEED</b> Matte cream, gold flecks	<b>#137   BUTTERSCOTCH</b> Frosted pale yellow	<b>#209   WHEAT</b> Matte creamsicle orange	<b>#255   SATIN GOLD</b> Frosted light orange	
					
<b>#124   FUTURISTIC</b> Frosted champagne	<b>#187   BEDAZZLED</b> Frosted pale peach	<b>#280   SANDPIPER</b> Shimmery champagne gold	<b>#131   NU BRONZE</b> Frosted medium deep gold	<b>#165   GOLDEN LEAF</b> Frosted antique gold	<b>#325   SOFT BROWN</b> Matte medium toffee
					
<b>#267   GILDED PEACH</b> Light gold, gold glitter flecks	<b>#178   BROWN BEAR</b> Frosted medium toffee	<b>#190   TRUFFLE</b> Amber with gold flecks	<b>#31   CHINCHILLA</b> Light toffee, glitter flecks	<b>#157   ISLAND SUNSET</b> Shimmery orange copper	<b>#293   SAFARI BROWN</b> Warm chocolate brown, gold flecks
					
<b>#32   CEDAR</b> Cool medium brown	<b>#121   JAVA</b> Matte medium taupey brown	<b>#248   SMOKIN</b> Frosted light bronze	<b>#312   SPICE SIERRA</b> Shimmery chocolate bronze	<b>#266   MOTHER EARTH</b> Cool chocolate brown with silver flecks	<b>#311   CHOCOLATE MOUSSE</b> Shimmery black brown
					
<b>#294   CRUSHED MAUVE</b> Shimmery deep chocolate					



• Minimum required for Color Library Shades, please contact your Brand Consultant for more information •



# Color Library

## EYE SHADOW

*Why your brand needs this?*  
 Eye Shadows are a staple item in any beauty brand! Create your brand's identity by selecting shades that are trending, everyday essentials, or seasonal musts.

A triple milled, pressed eye shadow available in over two hundred shades.

### INGREDIENTS

Talc, octyl palmitate, cyclomethicone, zinc stearate, phenoxyethanol, sodium benzoate. May contain: mica, iron oxide, manganese violet, titanium dioxide, red 40 lake, yellow #5, blue #1, ultramarines, chromium green

Net Weight: .052/1.48g

### PACKAGING OPTIONS



Pan only in clam shell, or can be assembled in palettes



Matte View Compact  
 Ideal for logo printing



**CRUELTY FREE** | **MADE IN USA**



#205   JASPER Light turquoise, gold flecks	#216   LIME DIVINE Frosted mint green	#145   TINKERBELL Frosted aqua blue	#307   KEY LIME Shimmery lime green	#139   GREEN VELVET Shimmery ivy green	#179   GUACAMOLE Shimmery light ivy green
#214   PETER PAN Shimmery light ivy green	#303   HOLLY GREEN Forest green, silver flecks	#185   NIGHT LIFE Shimmery dark ivy green	#186   GODDESS Shimmery pale green yellow	#201   TORNADO Medium taupey brown, silver flecks	#317   TENDER TEAL Matte blue green
#340   POISON IVY Matte charcoal green	#344   SECRET GARDEN Shimmery golden bronze	#101   ARMY GREEN Matte olive green	#309   OLIVE GOLD Shimmery ivy olive		
#261   GREEN PEACE Frosted shamrock green	#230   BEWITCHED Shimmery forest green	#270   BROWNIE Shimmery golden chocolate	#108   BLACK N BLUE Matte deep dark navy	#272   NIGHT SKY Gunmetal grey, silver flecks	#298   EVENING PLUM Matte deep charcoal brown
#301   WINTER SOLSTICE Pearly off white	#91   NEARLY BEIGE Matte taupey grey	#313   TOASTED MARSHMALLOW Taupe grey with gold flecks	#227   WITCHCRAFT Black with silver glitter flecks	#153   SOLAR SYSTEM Matte medium blue grey	#109   BLACK MAGIC Matte deep dark charcoal

• Minimum required for Color Library Shades, please contact your Brand Consultant for more information •



# Color Library

## EYE SHADOW

*Why your brand needs this?*  
 Eye Shadows are a staple item in any beauty brand! Create your brand's identity by selecting shades that are trending, everyday essentials, or seasonal musts.

A triple milled, pressed eye shadow available in over two hundred shades.

### INGREDIENTS

Talc, octyl palmitate, cyclomethicone, zinc stearate, phenoxyethanol, sodium benzoate. May contain: mica, iron oxide, manganese violet, titanium dioxide, red 40 lake, yellow #5, blue #1, ultramarines, chromium green

Net Weight: .052/1.48g

### PACKAGING OPTIONS



Pan only in clam shell, or can be assembled in palettes



Matte View Compact  
 Ideal for logo printing



**CRUELTY FREE**

**MADE IN USA**



<b>#99   TAUPE</b> Slightly frosted taupe grey	<b>#330   ENCHANTED FOREST</b> Shimmery taupe, green shift	<b>#193   GRAPHITE</b> Frosted gunmetal silver	<b>#173   STARRY NIGHT</b> Grey with a gold sparkle	<b>#208   MOONBEAM</b> Pale blue, gold flecks	<b>#259   CARBON</b> Sheer frosted grey, blue green shift
<b>#268   DENIM</b> Denim blue with silver flecks	<b>#170   TWILIGHT</b> Shimmery royal blue	<b>#17   SAPPHIRE</b> Shimmery royal blue	<b>#223   TURQUOISE</b> Bright electric blue	<b>#144   HEAVENS ABOVE</b> Frosted medium blue	<b>#53   OCEAN BLUE</b> Matte bright blue
<b>#155   BLUE LAGOON</b> Frosted medium sky blue	<b>#22   SKY BLUE</b> Sheer frosted baby blue	<b>#21   BLUE MIST</b> Frosted light steel blue	<b>#263   BABY BLUE</b> Frosted very light blue	<b>#217   LULLABY</b> Frosted light lavender	<b>#138   BLUE VELVET</b> Frosted sapphire blue
<b>#273   MYSTIC BLUE</b> Periwinkle with silver flecks	<b>#253   BLUE BAYOU</b> Shimmery cornflower blue	<b>#262   SHADES OF BLUE</b> Frosted bright sky blue	<b>#197   TEAL FROST</b> Frosted light teal blue	<b>#283   TRANQUIL TEAL</b> Deep teal grey	<b>#203   MEADOW</b> Medium deep teal, silver flecks





# Eyeshadow Palettes

## MAGNIFICENT 7 PALETTE

A seven pan palette with a built in mirror. Fill with your choice of eye shadows or choose one of our pre-selected collections.

### INGREDIENTS

Talc, Octyl Palmitate, Cyclomethicone, Zinc Stearate, Phenoxyethanol, Sodium Benzoate. May Contain: Mica, Iron Oxide, Manganese Violet, Titanium Dioxide, Red 40 Lake, Yellow #5, Blue #1, Ultramarines, Chromium Green

Net Weight: .37Oz/10.35g

Available Empty



Your Logo or Design

Why your brand needs this?

Seven is the perfect number of shades for your customers to create a versatile look, from simple and casual to a glammed night out creation. Great for building awareness to your brand with the large, sleek, front of the palette just waiting to have your logo / design printed by our team.

CRUELTY FREE  
MADE IN USA



### STOCK SHADE SELECTIONS



#### CLASSIC GLAM PRE-FILLED PALETTE

A mix of soft earth-tones thoughtfully selected to suit all skin tones. These shades are long lasting, highly pigmented, and can be blended effortlessly.



#### MATTE ESSENTIALS PRE-FILLED PALETTE

A combination of 7 richly pigmented and smooth-matte colors that effortlessly create any wearable eye look. This beautiful selection of colors creates a must-have essential palette.

## Ready to create your own palette?

Bring your vision to life by selecting 7 colors of your choice from our extensive Eyeshadow collection to create your own exclusive palette!



36 piece min. to have your selected shades filled into your customized Magnificent 7 palette.

# FOUR ME PALETTE

Fill our 4 pan palette with your shades or pick one of our pre-selected collections.

## INGREDIENTS

Talc, Octyl Palmitate, Cyclomethicone, Zinc Stearate, Phenoxyethanol, Sodium Benzoate.  
 May Contain: Mica, Iron Oxide, Manganese Violet, Titanium Dioxide, Red 40 Lake, Yellow #5, Blue #1, Ultramarines, Chromium Green  
 Net Weight: 0.21oz/5.92g

## STOCK SHADE SELECTIONS



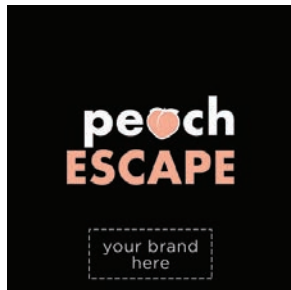
### PURPLE PARADISE PRE-FILLED PALETTE

These purple tones are giving us all the life and energy we need! A variation that can be worn during all seasons of the year!



### NUDE BEACH PRE-FILLED PALETTE

When all else fails, earthy-nude tones are the way to go! 4 colors to perfectly complement each other.



### PEACH ESCAPE PRE-FILLED PALETTE

This warm palette is a universal fav! Fall in love and escape into a blend of wearable peach tones.



Available Empty



**CRUELTY FREE**

**MADE IN USA**



*Why your brand needs this?*  
 The Four Me palette is a **MUST** for your brand! Introduce eye shadows with this sleek design. Your customers will love how easy and convenient it is to use and carry.

## Ready to create your own palette?

Bring your vision to life by selecting **4 colors of your choice** from our extensive collection and create your own exclusive palette.



36 piece min. to have your selected shades filled into your customized Four Me Palette.





EYE DUO



FOUR ME



CLASSIC QUAD



G PALETTE



MAGNIFICENT 7



FACEBOOK



FACETIME



FACEKIT

## Ready to create your own palette?

Bring your vision to life by selecting the colors of your choice from our extensive collection and create your own exclusive palette. 36 piece minimum to have your selected shades filled into your customized palette.

**Need help with design ideas or creating your logo?**  
Ask your Brand Consultant about our design services



# Baked Mineral Eye Shadows

*Why your brand needs this?*  
Eye shadow application has never been easier than with these super creamy and pigmented baked mineral eye shadows. Not only will they make your brand stand out in the crowd with their unique look and texture, your customers will fall in love with their creamy consistency and effortless payoff.



*Botanically infused, baked eye shadows are richly pigmented. These shadows start as a cream and are baked for 24 hours on a terracotta pan, creating a dome shape, and an unparalleled silky texture for a smooth application.*

Net Weight: .06 Oz/1.8g

## PACKAGING OPTIONS



Pan only in clam shell



Matte View Compact  
Ideal for logo printing



**CRUELTY FREE**

## BAKED BEAUTIES



AMORE



BELIZE



BISCOTTI



CHIANTI



DOLCE VITA



GRAZIA



VIVA

**INGREDIENTS** Mica, Sericite Mica, Silica, Dimethicone, Simmondsia Chinensis (Jojoba) Seed Oil, Carthamus Tinctorius (Safflower) Seed Oil, Lavandula Angustifolia (Lavender) Flower Extract, Thymus Vulgaris (Thyme) Extract, Camellia Sinensis (Green Tea) Extract, Tocopheryl Acetate, Rosmarinus Officinalis (Rosemary) Leaf Extract, Magnolia Officinalis (Magnolia Bark) Extract, May Contain: Iron Oxides, Titanium Dioxide, Ultramarine



## EYE FUSIONS



BLUE FUSION



LAVENDER FUSION



PINK FUSION

### *Color Library*

Minimum required for  
Color Library Shades.  
Please contact your Brand  
Consultant for more  
information



BROWN FUSION

**INGREDIENTS** Mica, Sericite Mica, Silica, Dimethicone, Simmondsia Chinensis (Jojoba) Seed Oil, Carthamus Tinctorius (Safflower) Seed Oil, Lavandula Angustifolia (Lavender) Flower Extract, Thymus Vulgaris (Thyme) Extract, Camellia Sinensis (Green Tea) Extract, Tocopheryl Acetate, Rosmarinus Officinalis (Rosemary) Leaf Extract, May contain: Iron Oxides, Titanium Dioxide, Ultramarine

## EYE TRIOS



AQUA TRIO



BRONZE TRIO



MULBERRY TRIO



PASTEL TRIO



SKY TRIO



SMOKEY TRIO

**INGREDIENTS** Mica, Sericite Mica, Simmondsia Chinensis (Jojoba) Seed Oil, Lavandula Angustifolia (Lavender) Flower Extract, Thymus Vulgaris (Thyme) Extract, Camellia Sinensis (Green Tea) Extract, Tocopheryl Acetate, Rosmarinus Officinalis (Rosemary) Leaf Extract, May Contain: Iron Oxides



# mascaras, eye liners, & more



*when in  
doubt*

**WING IT OUT**

**Grafton**  
PRIVATE LABEL COSMETICS





# Mascara

Why your brand needs this?

Lashes... everyone's got them! Mascara is great to carry in your beauty brand because it's an essential product and typically worn everyday. Choose from a variety of formulas to see which best fits your brand's identity.

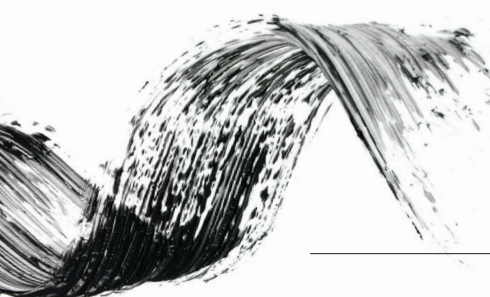
## LONG LASH MASCARA

A highly pigmented, long lasting, lengthening mascara formula with 73% natural ingredients.

### INGREDIENTS

Deionized Water (Aqua), Iron Oxide, Euphorbia Cerifera (Candelilla) Wax, Sucrose Stearate, Copernicia Cerifera (Carnauba) Wax, Cichorium Intybus (Chicory Root) Extract, Propanediol, Helianthus Annuus (Sunflower) Seed Wax, Phenoxyethanol, Galactoarabinan, Capryl Glycol, Potassium Sorbate, Caesalpinia Spinosa Gum, Acacia Senegal Gum

Net Weight: .25 Oz/7g



BLACK



CRUELTY FREE

MADE IN USA

## SUPERLASH MASCARA

Mascara enriched with Vitamin B to moisturize and condition lashes.

### INGREDIENTS

Deionized Water, Iron Oxides, Paraffin, Stearic Acid, Cera Alba (Beeswax), Copernicia Cerifera (Carnauba) Wax, Hydroxyethyl cellulose, Potassium Hydroxide, Phenoxyethanol, Panthenol

Net Weight

Black Metal Case: .25 Oz /7g

Black Matte Cap/Clear Tube: .25 Oz/7g

Mini Black Matte Cap/Clear Tube: 0.12 Oz./3.4g

### PACKAGING OPTIONS



Black Metal Case

Black Cap

Mini

CRUELTY FREE



MADE IN USA



BLACK



BROWN



NAVY\*



CLEAR

\* 288 pc min

# LASH LUXE MASCARA

*A lengthening mascara formulated with panthenol to boost hydration. The lash separating wand is ideal for short lashes to avoid clumping.*

## INGREDIENTS

Deionized Water, Iron Oxides, Paraffin, Stearic Acid, Cera Alba (Beeswax), Copernicia Cerifera (Carnauba) Wax, Hydroxyethyl cellulose, Potassium Hydroxide, Phenoxyethanol, Panthenol

Net Weight: .25 Oz/7g



ONYX

Tube comes printed with Lash Luxe name. Your logo can be printed on the other side.



**CRUELTY FREE**

**MADE IN USA**



# LASH PRIME & DEFINE

*Lengthens, thickens and conditions lashes. Apply to lashes before applying mascara.*

## INGREDIENTS

Water (Aqua), Ceresin, Stearic Acid, Oleyl Alcohol, Copernicia Cerifera (Carnauba) Wax, Phenoxyethanol, Sodium Benzoate, Sorbitan Sesquioleate, Potassium Hydroxide, Butylene Glycol, Glycine Soja (Soybean) Extract, PVP, Panthenol

Net Weight: .25 Oz/7g



**CRUELTY FREE**



**MADE IN USA**



# LASH DRAMA MASCARA

*Dramatic volume and length! Highly pigmented, lengthening formula infused with chicory root to give you the fullest and most dramatic lashes!*

## INGREDIENTS

Deionized Water (Aqua), Iron Oxide, Euphorbia Cerifera (Candelilla) Wax, Sucrose Stearate, Copernicia Cerifera (Carnauba) Wax, Cichorium Intybus (Chicory Root) Extract, Propanediol, Helianthus Annuus (Sunflower) Seed Wax, Phenoxyethanol, Galactoarabinan, Capryl Glycol, Potassium Sorbate, Caesalpinia Spinosa Gum, Acacia Senegal Gum

Net Weight: .25 Oz/7g



BLACK



**CRUELTY FREE**



**MADE IN USA**



Tube comes with professionally printed Lash Drama label. Ask your Brand Consultant if you would like your own custom wrap around label.



*Why your brand needs this?*

Customers love liquid liners for their easy glide-on application with no smudges, feathering or running! Whether your brand caters to the advanced makeup artist or inexperienced makeup lover, a liquid liner is a great, everyday product!

## LIQUID EYE LINER

*A water-resistant liner that lasts all day with a precision brush for accuracy.*

### INGREDIENTS

Deionized Water (Aqua) Propanediol, Acrylates/Octylacrylamide Copolymer, Xanthan Gum, Phenoxyethanol, Disodium EDTA, Caprylic Glycol, Potassium Hydroxide, May Contain: Titanium Dioxide, Manganese Violet, Ultramarines, Mica, Iron Oxides  
Net Weight: .125 Oz/3.5g



Matte Black Tube  
Ideal for logo printing



BEIGE FROST



BLACK



DARK BROWN



NAVY \*



WHITE \*

\* 288pc minimum



**CRUELTY FREE**

**MADE IN USA**

## PRECISION LINER

*A semi-permanent liquid eye liner with a felt tip. Ideal for the perfect cat eye!*

### INGREDIENTS

Aqua, Aloe Barbadosensis Leaf Juice Powder, Polyurethane-35, Styrene/Acrylates Copolymer, Polyglyceryl-2 Caprate, Methylpropanediol, Laureth-21, Glycerin, Phenoxyethanol, Peg-40 Hydrogenated Castor Oil, Butylene Glycol, Tri-C12-13 Alkyl Citrate, Caprylyl Glycol, Panthenol, Stearic Acid, Palmitic Acid, Sodium Dehydroacetate, Ethylhexylglycerin, Tocopherol, Phenylpropanol, Tetrasodium Glutamate Diacetate, Helianthus Annuus (Sunflower) Seed Oil, Citric Acid, Sodium Hydroxide  
Net Weight: 1.0ml



BLACK



**CRUELTY FREE**

**MADE IN USA**

\* logo printing not available, ask your brand consultant about professional labels  
STORE BRUSH SIDE DOWN

## I LINE

*With just a drop or 2, turn any eye shadow or shimmer powder into a waterproof eyeliner. Can also be applied over eye pencil to seal it in place and make it waterproof.*

### INGREDIENTS

Water (Aqua), Hydroxyethyl Cellulose, Polysorbate 20, Propylene Glycol, Sodium Benzoate  
Net Weight: Pro: .5 Oz /14.2g  
Retail: .125 Oz/3.5g



Professional Size



Retail Size



**CRUELTY FREE**

**MADE IN USA**



# Mineral Eye Crayons & Eye Pencils

*Why your brand needs this?*  
Eye liners are a staple item for any beauty brand! Choose from our collection of shades to see what best suits your brand's vision.

## MINERAL EYE CRAYONS

A classic wooden pencil made with plant-based oils & waxes, natural mineral colorants, and vitamin E for a rich and creamy consistency.

**INGREDIENTS** Helianthus Annuus (Sunflower) Seed Oil, Cocos Nucifera (Coconut Oil), Cera Alba (Beeswax) Copernicia Cerifera (Carnauba) Wax, Rhus Succedanea Fruit Wax, Tocopheryl Acetate, May Contain: Mica, Titanium Dioxide, Ultramarines, Iron Oxides, Manganese Violet, Chromium Oxide Green  
Net Weight: .04 oz/1g



## EYE PENCILS

A classic wooden pencil made with vitamin E for a rich and creamy consistency.

**INGREDIENTS** Helianthus Annuus (Sunflower) Seed Oil, Cocos Nucifera (Coconut) Oil, Cera Alba (Beeswax), Copernicia Cerifera (Carnauba) Wax, Rhus Succedanea Fruit Wax, Tocopheryl Acetate, May Contain: Titanium Dioxide, Talc, Ultramarines, Iron Oxides, Mica, Manganese Violet, Chromium Oxide  
Net Weight: .035 Oz/1g







# eye brow essentials



**Grafton**  
PRIVATE LABEL COSMETICS

**Boss Babe**

*Why your brand needs this?*

**Brows are always trending!**  
Show your customers how easy it is to create naturally defined brows with our pressed brow powders.

## BROW DEFINER

Fill in your brows for a full and natural look. This triple milled, pressed powder brow definer will also help set brow pencils to make them last longer.

**INGREDIENTS** Mica, Zinc Stearate, Octyl Palmitate, Cyclomethicone, Citrus Aurantium (Orange) Oil, Cymbopogon Citratus (Lemon Grass) Oil, Sesamun Indicum (Sesame) Oil, May Contain: Iron Oxide, Titanium Dioxide, Ultramarines, Manganese Violet  
Net Weight: .11 Oz/3.1g

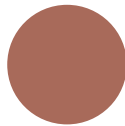
### PACKAGING OPTIONS



Pan only in clam shell or can be assembled in palettes



Matte View Compact  
Ideal for logo printing



AUBURN



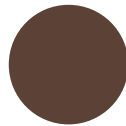
BLONDE



BROWN



TAUPE



DARK BROWN



CHARCOAL

**CRUELTY FREE**

**MADE IN USA**



## BROW WAX SPLITZ

*2 in 1 brow definer & brow wax.  
Comes with eyebrow applicator brush.*

**INGREDIENTS**

**BROW POWDER**  
Mica, Zinc Stearate, Octyl Palmitate, Cyclomethicone, Citrus Aurantium (Orange) Oil, Cymbopogon Citratus (Lemon Grass) Oil, Sesamun Indicum (Sesame) Oil. May Contain: Iron Oxide, Titanium Dioxide, Ultramarines, Manganese Violet

**BROW WAX**  
Microcrystalline Wax, Talc, Ozokerite, Cera Alba (Beeswax) Octyldodecanol, Polybutene

Net Weight: Brow Wax: .048 Oz/1.35g  
Brow Definer: .055 Oz/1.55g



**PACKAGING**



Matte View Compact  
Ideal for logo printing



AUBURN



BLONDE



BROWN



DARK BROWN



CHARCOAL

**CRUELTY FREE**

**MADE IN USA**





## MINERAL BROW PENCILS

*Mineral pencil with spoolie applicator. Define, sculpt and shape the perfect brows with this waterproof brow pencil.*

**INGREDIENTS**

Helianthus Annuus (Sunflower) Seed Oil, Cocos Nucifera (Coconut) Oil, Copernicia Cerifera (Carnauba) Wax, Rhus Succedanea Fruit, Cera Alba (Beeswax), May Contain: Titanium Dioxide, Ultramarines, Cetyl Palmitate, May Contain: Mica, Iron Oxides, Chromium Oxide Green  
Net Weight: .035oz/1g



SOFT BLONDE



MEDIUM BROWN



DARK BROWN



CHARCOAL

**CRUELTY FREE**



**MADE IN USA**



*Why your brand needs this?*

Effortless application makes these brow pencils a classic go-to product for your customers!

With a touch of concealer and highlighter, our 2 in 1 brow crayon is the perfect add-on item for your customers to complete their brows.

## CONCEALER BROW HIGHLIGHTER DUO

*A double-ended chubby crayon that corrects or enhances features by concealing or highlighting. This creamy formula is great for on-the-go touch ups.*

**INGREDIENTS**

Cera Alba (Beeswax), Ricinus Communis (Castor) Seed Oil, Ethylhexyl Palmitate, Isopropyl Myristate, Ceresin, Bis-Diglyceryl Polyacyladipate-2, C10-18 Triglycerides, Hydrogenated Polydecene, Copernicia Cerifera (Carnauba) Wax May Contain: Mica, Titanium Dioxide, Iron Oxides, Tin Oxide  
Net Weight: 0.19 Oz/5.6g

**CRUELTY FREE**



**MADE IN USA**



COOL BEIGE | BEIGE HIGHLIGHTER



WARM BEIGE | GOLD HIGHLIGHTER



## BROW FIX

*A clear brow gel that keeps brows shaped and in place all day!  
Can also be used as a clear mascara.*

**INGREDIENTS** Aqua (Water), PVP/VA Copolymer, Polysorbate 20, Hydrolyzed Glycosaminoglycans, Carbomer 980, Propylene Glycol, Sodium Hyaluronate, Phenoxyethanol, Disodium EDTA  
Net Weight: .25 Oz/7g



**CRUELTY  
FREE**  
**MADE  
IN USA**



*Why your brand  
needs this?*

*Brow Fix and Tinted Brow Gels are great items for beginners or experts in brow application. Your customers will love how easy it is to achieve a fuller-looking brow with these tinted brow gels.*

## TINTED BROW GEL

*A pigmented gel that coats brows with natural looking color and keeps them shaped and in place all day.*

**INGREDIENTS** Water (Aqua), Phenoxyethanol, Hydroxypropyl Methylcellulose, Xanthan Gum, PVP, Glycerin, Potassium Hydroxide, Tocopherol Acetate, BHT May Contain: Titanium Dioxide (CI 77891), Mica (CI 77019), Iron Oxides (CI 77491, CI 77492, CI 77499), Talc  
Net Weight: .25 Oz/7g



Black Cap Tube  
Ideal for logo  
printing

**CRUELTY  
FREE**  
**MADE  
IN USA**



AUBURN



BLONDE



DARK BROWN



CHARCOAL



# glitter & shimmer



*is your brand*  
**READY TO SHINE?**



**Grafton**  
PRIVATE LABEL COSMETICS



## EYE SHIMMERS *Loose mineral shimmer powder in jar with sifter, best when used with Glitz Fix.*

### INGREDIENTS

Mica, May Contain: Titanium Dioxide, Iron Oxide, Ferric Ferro Cyanide

Net Weight: .14 oz / 4g



Clear lid jar  
Ideal for logo  
printing

**CRUELTY  
FREE**

**MADE  
IN USA**



*Why your brand  
needs this?*

*Adding a little sparkle  
and shine has never  
been easier than  
selecting from our  
wide array of loose  
pigments & glitters!*



STARDUST



PINK OPAL



BLUE OPAL



BUFF



PEACH PUFF



COTTON CANDY



PINK QUARTZ



ROSY PINK



TICKLED PINK



WILD ORCHID

*on sale!*



WILD VIOLET



SHRINKING VIOLET



PURPLEXED



PURPLE HAZE

*on sale!*

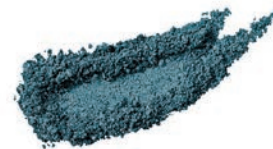


BELL BOTTOM BLUE

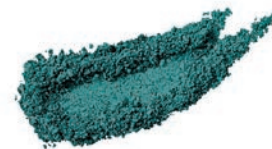


BLUE HAWAIIAN

*on sale!*



BLUE JEANS



CARIBBEAN SEA



TIDAL WAVE



SEAFOAM

*on sale!*



KIWI



AVOCADO



EMERALD CITY



MARTINI OLIVE



SAND DOLLAR



PAT-A-CAKE





## Color Library

Minimum required for Color Library Shades. Please contact your Brand Consultant for more information



MOONDUST



GOTHIC GOLD

## GLITZ FIX

*This is a must have for any serious glitter lover!  
This water soluble gel adhesive is safe on the eyes and skin.*

### INGREDIENTS

Distilled Water, Polysorbate 20, Hydrolyzed Mucopolysaccharide, Carbomer 980, Potassium Hydroxide, Propylene Glycol, Phenoxyethanol  
Net Weight: .25 oz / 7g



Black Cap Tube  
Ideal for logo printing

**CRUELTY  
FREE**

**MADE  
IN USA**



## EYE GLITTERS

Loose cosmetic grade glitter in jar with sifter, best when used with Glitz Fix.

### INGREDIENTS

Polyethylene Terephthalate, Acrylates Copolymer

Net Weight: .14 oz / 4g



Clear lid jar  
Ideal for logo  
printing

**CRUELTY  
FREE**

**MADE  
IN USA**



WHITE DIAMONDS



DAZZLEDUST



BIG APPLE



BERMUDA PINK



RIO DE JANEIRO



SHOWGIRL



ROYAL PURPLE



PURPLE RAIN



GARNET GLOW



STARBURST



COLORADO ROCKIES



GOLDEN TREASURE



GOLD DIGGER



BRONZE



RAINFOREST



PERIWINKLE



STAR SPANGLED BLUE



AQUAMARINE



LITTLE MERMAID



SILVERSTREAK

### Color Library

Minimum required for Color Library Shades. Please contact your Brand Consultant for more information



ATLANTIS



HUNTER GREEN



ST. TROPEZ



FALLING STAR



TUXEDO



# start blushing



**Grafton**  
PRIVATE LABEL COSMETICS







# Blush

Why your brand needs this?

Blushes are a staple item in any beauty brand! Choose from our large variety of shades and finishes that best fit your cosmetic line.

A collection of pigmented, pressed powder blushes, in a soft, buildable formula. Ranging from matte to high-frost finishes.

**INGREDIENTS** Talc, octyl palmitate, cyclomethicone, zinc stearate, phenoxyethanol, sodium benzoate, mica. May contain: iron oxides, manganese violet, titanium dioxide, yellow #5, red #6, #7, #30, blue #1, ultramarines, chromium green  
Net Weight: .11 Oz/3.1g

## PACKAGING OPTIONS



Pan only in clam shell, or can be assembled in palettes



Matte View Compact  
Ideal for logo printing



CRUELTY FREE

MADE IN USA



Perfect for highlighters or blush



#815 | PEACH KISS  
Super frosted peachy pink



#801 | PINK CHAMPAGNE  
Super frosted light pink



#802 | ROSE QUARTZ  
Frosted true pink



#816 | PINK BLISS  
Iridescent pink, hint of lilac



#805 | PIXIE DUST  
Shimmery golden bronze



#501 | CHIC  
Frosted rose-pink



#406 | TEA ROSE  
Medium, subtle peach-pink



#423 | PEACH PARADISE  
Light, bright peach



#476 | CRUSHED APRICOT  
Pale pastel cream peach



#416 | KISS OF PEACH  
Bright electric pink



#810 | KITTEN  
Frosted pastel pink



#471 | COTTON CANDY  
Iridescent pink, hint of lilac



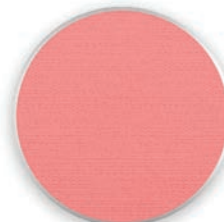
#486 | NUDE  
Shimmery pale pink



#487 | AU NATURELE  
Matte muted mauve



#474 | PEACH NECTAR  
Medium salmon rose



#456 | APRICOT  
Matte medium peach



#500 | FORGET ME NOT  
Light nude peach





**#459 | NUGGET**  
Very shimmery copper-gold



**#514 | HONEY**  
Soft shimmery tan nude



**#498 | PERCEPTIVE**  
Warm light gold peach



**#515 | NEARLY NUDE**  
Soft nude with light shimmer



**#516 | BLUSHING NUDE**  
True matte nude



**#517 | BEACH BUM**  
Shimmery peachy nude



**#518 | VACAY**  
Matte peachy nude



**#401 | CONTOUR**  
Matte neutral brown



**#444 | SHEER MOCHA**  
Bright warm red, peach undertone



**#448 | MOJAVE**  
Warm brick brown



**#519 | BURNT CORAL**  
Matte peachy nude



**#405 | TOUCH OF PINK**  
Rose-brick pink



**#413 | MOCHA**  
Deeper tone rose



**#494 | DOZEN ROSES**  
Matte rose-pink



**#513 | CHOCOLATE**  
Deep with neutral undertone



**#512 | CHESTNUT**  
Deep warm with red undertone



**#510 | ROSE**  
Shimmery red



**#806 | AMBER SKY**  
Super frosted berry nude



**#455 | TERRA ROSE**  
Neutral pink, hint of brown



**#470 | SHOOTING STAR**  
Medium, sheer, muted-lilac



**#480 | RAISIN CAIN**  
Sparkly, muted, brown-plum



**#520 | WILDBERRY**  
Cool plummy brown



**#484 | DUSK**  
Light taupe pastel



**#454 | HAZELNUT**  
Matte taupe



**#503 | TEMPTRESS**  
Light pastel lilac, hint of pink



**#472 | PRETTY PINK**  
Light pastel lilac



**#458 | SHEER**  
Soft earth tone nude pink



**#402 | WHITE LITE**  
Soft light cream

# Color Library

## BLUSH

• Minimum required for Color Library Shades, please contact your Brand Consultant for more information •



**#443 | PEACHY PUFF**  
Pale pastel peach



**#467 | PINK MIRAGE**  
Pale pastel pink



**#442 | ROSEWOOD**  
Pale nude



**#493 | SURRENDER**  
Pale warm nude



**#468 | LOCA MOCHA**  
Light berry brown



**MINERAL CHIFFON**  
Matte soft pale pink



**#481 | AMARETTO**  
Iridescent ginger pink



**#435 | PINK BROWN**  
Medium tone berry plum



**#441 | INTOXICATION**  
Deep berry



**#438 | PLUM BROWN**  
Berry brown



**#439 | SABLE**  
Medium brown with a hint of red



**MINERAL KAVA**  
Matte warm nude



**MINERAL ALL AGLOW**  
Soft shimmery light nude



**MINERAL DOGWOOD**  
Matte cool nude



**#506 | SAND TROPEZ**  
Medium rosy plum



**#479 | GRAPES OF WRATH**  
Deep eggplant



**#507 | SUGAR PLUM**  
Medium iridescent lavender



**#465 | HAZE**  
Light shimmery plum



**#478 | SANIBEL SUNSET**  
Bright coral pink



**#429 | WILD ORCHID**  
Bright medium tone pink



**#477 | HONEY ROSE**  
Bright peachy pink



**#431 | BERRY BURGANDY**  
Pure cranberry



**#509 | COSMIC RASPBERRY**  
Berry purple



**#415 | CLASSIC PLUM**  
Medium tone berry pink



# Color Library

## BLUSH

• Minimum required for Color Library Shades, please contact your Brand Consultant for more information •



**#813 | ATTITUDE**  
Frosted light cranberry



**#464 | PASSION**  
Metallic deep plum



**#502 | GLAZED AMETHYST**  
Sparkly berry pink



**#504 | WILD RASPBERRY**  
Medium tone purple with pink



**#807 | SORBET**  
Super frosted peachy pink



**MINERAL PEONY**  
Matte peachy pink



**#508 | POPPY FIELD**  
Light pastel orange



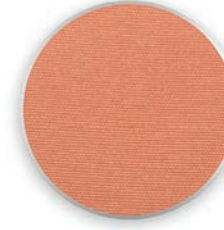
**#495 | LIFE'S A PEACH**  
Matte peach-orange



**#511 | PEACH VIBES**  
Frosted peach



**#440 | GINGER**  
Warm ginger red



**#475 | GOLDEN LADY**  
Warm ginger peach



**#814 | SPICY**  
Frosted pink apricot



**#446 | ADOBE**  
Light dusty plum



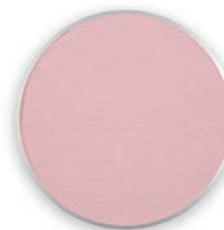
**#460 | CHESTNUT BEIGE**  
Soft earthy peach



**#452 | PRIMROSE**  
Soft nude neutral pink



**#417 | TROPICAL TAN**  
Medium ginger brown



**#485 | BLUSHING**  
Light pastel pink



**MINERAL TRANQUIL**  
Frosted soft nude



**MINERAL SATIN**  
Matte light nude



**MINERAL NECTAR**  
Matte soft peach



**#496 | RELIC**  
Soft dusty rose



# Blush Trio Palettes

*A buildable, blendable, blush palette filled with 3 perfectly paired shades that can be used together or separately to give your cheeks the perfect touch of blush. Easy to use & conveniently packaged. Richly pigmented blush formula!*

## INGREDIENTS

Talc, Octyl Palmitate, Cyclomethicone, Zinc Stearate, Phenoxyethanol, Sodium Benzoate, Mica. May Contain: Iron Oxides, Manganese Violet, Titanium Dioxide, Yellow #5, Red #6, #7, #30, Blue #1, Ultramarines, Chromium Green

Net Weight: .33 Oz /9.3g

*Why your brand needs this?*  
Blushes are a staple and your customers will love these ranges of colors!  
Build your brand's awareness by printing your logo or design on the front of this sleek, 3 pan palette.

**CRUELTY FREE**



**MADE IN USA**



RED ROSE



PINK HIBISCUS



MAUVE LILY



PEACH TULIP

## PACKAGING



## Want to create your own palette?

Bring your vision to life by selecting **3 colors of your choice** from our extensive collection and create your own exclusive palette. 36 piece min. to have your selected shades filled into your customized Blush Trio Palette.





# 2 in 1 Cream Blush & Lip Tint

*Why your brand needs this?*  
Looking for a versatile item for your brand? Our 2 in 1 Cream Blush/Lip Tint is something your customers must have! One quick swipe for a tinted lip or ultra-glowing cheek.

**A versatile cheek and lip tint that glides on and glows. Infused with moisturizing plant oils: shea butter, olive oil, jojoba seed oil, and anti-inflammatory myrrh oil.**

## INGREDIENTS

Caprylic/Capric Triglyceride, Mica, Ethylhexyl Palmitate, Ricinus Communis (Castor Oil), Ceresin, Phenyl Trimethicone, Microcrystalline Wax, Aluminum Starch Octenylsuccinate, Titanium Dioxide, Beeswax, Sorbitan Sesquioleate, Oleic Acid, Tocopheryl Acetate, Ethylene Brassylate, BHT, May Contain: Iron Oxides, Manganese Violet, Red 6 Lake, Red 7 Lake, Red 40 Lake, Yellow 6 Lake, Talc

Net Weight: .11 Oz/3.3g

## PACKAGING OPTIONS



Pan only in clam shell, or can be assembled in palettes



Matte View Compact  
Ideal for logo printing



**CRUELTY FREE**

**MADE IN USA**



CORAL MIST



FELICITY



GLORIOUS



HARMONY



OASIS



SWEPT AWAY



TOTALLY SHY



PINK ESCAPE



NEUTRAL



DARING



BRONZE GLOW

# Baked Blushes

*Why your brand needs this?*

Does your brand offer a beautifully baked blush? These blushes are baked (not pressed like traditional blushes) to give them a unique dome-like appearance and color-payoff that is unmatched by any other formula. Just one swirl of a brush blends these beautiful shades together to give cheeks the perfect glow.



*These shimmery blushes start as a cream and are baked for 24 hours on a terracotta pan, creating a dome shape, and an unparalleled silky texture.*

Net Weight: .32 Oz/9g

## PACKAGING OPTIONS



Pan only in clam shell



Matte View Compact  
Ideal for logo printing



**CRUELTY FREE**

## BAKED MINERAL COLOR SPLASH



ANGELIC



GINGER



SPICY



FIESTA

**Versatile product:**  
May be used as Blush, Highlighter, and Bronzer!

**INGREDIENTS** Mica, Sericite Mica, Simmondsia Chinensis (Jojoba) Seed Oil, Carthamus Tinctorius (Safflower) Seed Oil, Lavandula Angustifolia (Lavender) Flower Extract, Thymus Vulgaris (Thyme) Extract, Camellia Sinensis (Green Tea) Extract, Tocopheryl Acetate, Rosmarinus Officinalis (Rosemary) Leaf Extract, Iron Oxides

## Color Library

Minimum required for Color Library Shades. Please contact your Brand Consultant for more information



## BAKED MINERAL LÉ ROUGE

• Use as a Blush or Bronzer! •



APRICOT SWIRL



BERRY SWIRL



BRONZE SWIRL



COPPERTONE SWIRL



GUAVA SWIRL



PINK SWIRL

**INGREDIENTS** Mica, Sericite Mica, Simmondsia Chinensis (Jojoba) Seed Oil Carthamus Tinctorius (Safflower) Seed Oil, Lavandula Angustifolia (Lavender) Extract, Thymus Vulgaris (Thyme) Extract, Camellia Sinensis (Green Tea) Extract, Tocopheryl Acetate, Rosmarinus Officinalis (Rosemary) Leaf Extract, Iron Oxides

## BAKED MINERAL BLUSH FUSION



MATTE APRICOT FUSION



MATTE BERRY FUSION



PEACH FROST FUSION



RASPBERRY FROST FUSION

**INGREDIENTS** Mica, Sericite Mica, Silica, Dimethicone, Simmondsia Chinensis (Jojoba) Seed Oil, Carthamus Tinctorius (Safflower) Seed Oil, Lavandula Angustifolia (Lavender) Flower Extract, Thymus Vulgaris (Thyme) Extract, Camellia Sinensis (Green Tea) Extract, Tocopheryl Acetate, Rosmarinus Officinalis (Rosemary) Leaf Extract, May Contain: Iron Oxides, Titanium Dioxide, Ultramarine



# Blush Bouquet

A combination of pigmented, powder blushes, pressed into a beautiful flower shape. Ranging from matte to high-frost finishes.

## INGREDIENTS

Talc, Mica, Titanium Dioxide, Octyldodecyl Stearoyl Stearate, Oryza Sativa (Rice) Bran Wax, Diisostearyl Malate, Hydrogenated Polyisobutene, Dimethicone, Zinc Stearate, Polyisobutene, Bis-Diglyceryl polyacyladipate-2, Oryza Sativa (Rice) Powder, Dimethicone Trimethylsiloxysilicate, Dimethicone/Vinyl Dimethicone Crosspolymer, Polysiloxane, Magnesium Stearate, Capryloyl Glycine, Deidrocetate Sodium, Undecylenoyl Glycin, May contain: Iron Oxides, Ultramarines, Manganese Violet

Net Weight: .758 Oz /21.5g

*Why your brand needs this?*  
Ready for your brand to blossom? Let your brand stand out in the industry with this unique rose pattern blush bouquet. Each blush comes with a variety of colors that when blended together, create a beautiful, pigmented blush tone.

## PACKAGING OPTIONS



Pan only in clam shell, or can be assembled in palettes



Matte View Compact  
Ideal for logo printing



**CRUELTY FREE**

**MADE IN USA**



AUTUMN FLOWER



GARDEN BOUQUET



ROSE PETAL

## Color Library

Minimum required for Color Library Shades. Please contact your Brand Consultant for more information



PINK CARNATION



PRETTY-N-PINK



MAPLE LEAF





# Cheek Contour

*Why your brand needs this?*  
Your customers will love how easy it is to add the perfect pop of color with these cheek contours. Use each color individually for highlighting and contouring, or combine all 3 beautiful shades together to make the perfect contoured cheek!

**Highlight, brighten & contour with an all-in-one cheek combo.**

## INGREDIENTS

Talc, Mica, Nylon-12, Magnesium Stearate, Silica, Hydrogenated Polyisobutene, Dimethicone, Octyldodecyl Stearoyl Stearate, Phenoxyethanol, Bis-Diglyceryl Polyacyladipate-2, Tocopheryl Acetate, Ethylhexylglycerin.  
May contain: Titanium Dioxide, Iron Oxides, Ultramarine Blue, Red 7 Lake, Red 6, Manganese Violet  
Net Weight: .3 Oz/8.5g

## PACKAGING OPTIONS



Pan only in clam shell



Matte View Compact  
Ideal for logo printing



**CRUELTY FREE**  
**MADE IN USA**



BRONZE



CORAL



PINK



# lip prep & care





## LIP FIX NEUTRALIZER LIP PRIMER

*A cream base for lips. Lip Fix neutralizes the color of your lips allowing lipstick shade to remain true to color and last longer. Lip stay, lipstick and lipgloss can be used over Lip Fix.*

### INGREDIENTS



Dimethicone, Talc, Tricaprylyl Citrate, C12-15 Alcohol Benzoate, Isostearyl Palmitate, Magnesium Carbonate, C18-36 Acid Glycol Ester, Aluminum Starch Octenyl Succinate, Nylon 12, Boron Nitride, N-Lauroyl-L Lysine, Isostearyl Lactate, Hydrated Silica, Stearic Acid, Hydrogenated Vegetable Oil, Aloe Extract, Diazolidinyl Urea, Methylparaben, Propylparaben, Tocopheryl Acetate, Titanium Dioxide, Iron Oxide

Net Weight: .25 Oz/7g



Matte View Jar  
Ideal for logo printing

**CRUELTY  
FREE**  
**MADE  
IN USA**



*Why your brand needs this?*

Lip Treatments are great additions to any lip line!  
Treat lips with Lip Plump and Vitamin E. Prep lips with Lip Fix!

## LIP PLUMP

*A clear lip plumping lipgloss. Key ingredients: safflower oil, soybean oil, avocado oil, jojoba seed extract.*

### INGREDIENTS



Polyisobutene, Octyl Palmitate, Menthone Glycerin Acetal, Carthamus Tinctorius (Safflower) Oil, Glycine Soja (Soybean) Oil, Aloe Barbadosensis Leaf Extract, Tocopheryl Acetate, Persea Gratissima (Avocado) Oil, Simmondsia Chinensis (Jojoba) Seed Extract

Net Weight: .25 Oz/7g



**CRUELTY  
FREE**  
**MADE  
IN USA**



Round tube comes printed with "Lip Plump" name and ingredients, just add your logo to the other side!

## HEMP Stick

*A lip treatment and moisturizer, can be worn under lipstick! With Hemp oil, Vitamin E, sesame oil, orange oil and lemongrass oil.*

### INGREDIENTS



Ricinus Communis (Castor) Seed Oil (Organic), Bis-Diglyceryl Polyacyladipate-2, Euphorbia Cerifera (Candelilla) Wax, Propylene Glycol Dicaprylate/Dicaprate, Synthetic Beeswax, Cannabis Sativa (Hemp) Seed Oil, Copernicia Cerifera (Carnauba) Wax (Organic), Tocopherol Acetate, Citrus Aurantium (and) Cybopogon Citratus (and) Sesamun Indicum

Net Weight: .124oz/3.5g



**CRUELTY FREE**

**MADE IN USA**



Sky View Tube  
Ideal for logo printing

## VITAMIN E STICK

*Moisturize with Vitamin E for smoother, softer, and more refreshed lips!*

### INGREDIENTS



Ricinus Communis (Castor) Seed Oil, Butyrospermum Parkii (Shea Butter) Euphorbia Cerifera (Candelilla) Wax, Ozokerite, Tocopherol Acetate, Phenoxyethanol

Net Weight: .124oz/3.5g



Round Matte Tube  
Ideal for logo printing

**CRUELTY FREE**

**MADE IN USA**



## LIP PUMICE

*Lip scrub to exfoliate and remove dead skin cells to make lips softer.*

### INGREDIENTS



Ricinus Communis (Castor) Seed Oil, Caprylic/Capric Triglyceride, Kaolin, Simmondsia Chinensis (Jojoba) Seed, Cera Alba (Beeswax), Euphorbia Cerifera (Candelilla) Wax, Cetyl Acetate, Stearalkonium Hectorite, Propylene Carbonate

Net Weight: .16 Oz/4.5g



Round Matte Tube  
Ideal for logo printing

**CRUELTY FREE**

**MADE IN USA**







# lipsticks

*variety of formulas*

LIQUID MATTE, CREAM, SHEER, & SHINE

**Grafton**  
PRIVATE LABEL COSMETICS





# Lipstick



Why your brand needs this?

Lipsticks are a staple item for any lip line! Our wide selection of creamy lipstick shades lets you choose the perfect range for your brand to offer!

CRUELTY FREE

MADE IN USA



PACKAGING Round Matte Tube | Ideal for logo printing

A rich and creamy lipstick infused with Vitamin E and shea butter to moisturize.

## INGREDIENTS

Helianthus Annuus (Sunflower) Seed Oil, Euphorbia Cerifera (Candelilla) Wax, Butyrospermum Parkii (Shea Butter), Copernicia Cerifera (Carnauba) Wax, Cera Alba (Bees) Wax, Tocopheryl Acetate (Vitamin E), May Contain: Titanium Oxide, Manganese Violet, Red #6, Blue #1, Yellow #5 & 6, Mica, Iron Oxides

Net Weight: .15 Oz / 4.5g

## THE NUDES



#65



#64



#110



#154 coming soon!



#47



#145



#123



#57

### PENCILS THAT MATCH



FLESH



CURRY



ROSEWOOD



COGNAC

## THE PLUMS & BROWNS



#122



#155 coming soon!



#128



#147



#148



#109



#127



#153

### PENCILS THAT MATCH



ANTIQUÉ ROSE  
Mineral Lip Crayon



MOONLIT MAUVE



PASSION



EGGPLANT



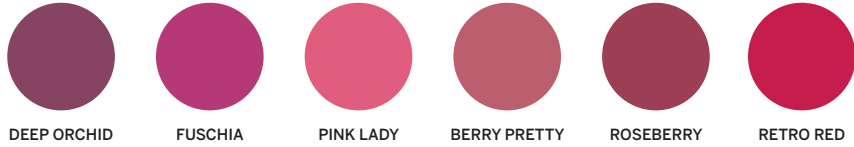
BOYSENBERRY  
Mineral Lip Crayon



THE PINKS, BERRIES & REDS



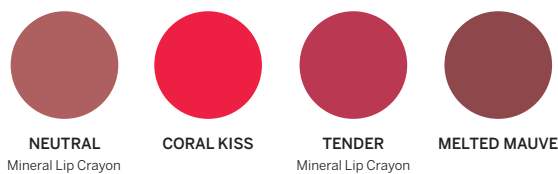
PENCILS THAT MATCH



THE SHIMMERY PEACHY GOLD



PENCILS THAT MATCH



# Color Library

## LIPSTICK

• Minimum required for Color Library Shades, please contact your Brand Consultant for more information •



#88



#90



#124



#119



#99



#141



#112



#115



#140



#58



#144



#142



#136



#135



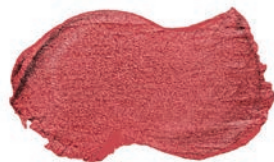
#14



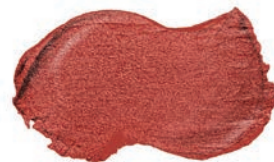
#54



#134



#131



#101



#52



#53



#117



#125



#6



#71



#1



#149



#108



#130



#59





# Lip Stay

A highly pigmented liquid matte lipstick that lasts for hours.

## INGREDIENTS

Isododecane, Synthetic Beeswax, VP/Hexadecene, Copolymer, Octyldodecanol, Caprylic/Capric Triglyceride, Disteardimonium Hectorite, Propylene Carbonate, Denatured Alcohol, Tocopheryl Acetate, Ethylhexylglycerin, May Contain: Titanium Dioxide, Yellow #5, Red #7, Red #27, Blue #1, Iron Oxide, Manganese Violet  
Net Weight: .125 Oz / 3.5g

## PACKAGING

Fluted Lip Tube | Ideal for logo printing



Why your brand needs this?

Lip Stay is a must if your brand is looking for the perfect, long lasting liquid matte lipstick.

Your customers will love this all-day wear formula with added vitamin E to help keep lips hydrated!



CRUELTY FREE

MADE IN USA



FAWN



BEIGE



NUDE



PURE POUT



TAMED



SWEET PINK



PINK



WILD ORCHID



PLUM



RED IN ROME



ELECTRIC RED



RUBY



CORAL



SINFUL



BLACKBERRY



MAUVE



SEPIA

## Color Library

Minimum required for Color Library Shades. Please contact your Brand Consultant for more information



WICKED



TOFFEE



# Liquid Metal Lipstick

Why your brand needs this?

Our best-selling liquid matte lipstick formula designed with the perfect metallic finish. Your customers will love this all-day wear formula with added vitamin E to help keep lips hydrated!

**A highly pigmented liquid matte lipstick, with a subtle metallic finish, that lasts for hours.**

**INGREDIENTS** Isododecane, Synthetic Beeswax, VP/Hexadecene, Copolymer, Octyldodecanol, Caprylic/Capric Triglyceride, Disteardimonium Hectorite, Propylene Carbonate, Denatured Alcohol, Tocopheryl Acetate, Ethylhexylglycerin, May Contain: Titanium Dioxide, Yellow #5, Red #7, Red #27, Blue #1, Iron Oxide, Manganese Violet  
Net Weight: .125 Oz / 3.5g

**PACKAGING** Fluted Lip Tube | Ideal for logo printing



**CRUELTY FREE**  
**MADE IN USA**



COWBOY SUEDE



BOSS BABE



POSH



RELENTLESS RED



ENVY



METAL AMBER



GINGER SPICE



ROCKSTAR





# Classic Matte Lipstick

A full coverage, traditional matte lipstick with lasting color. Enriched with sunflower seed oil, shea butter, and lemongrass oil to keep lips hydrated.

## INGREDIENTS

Helianthus Annuus (Sunflower) Seed Oil, Euphorbia Cerifera (Candelilla) Wax, Butyrospermum Parkii (Shea) Butter, Copernicia Cerifera (Carnauba) Wax, Cera Alba (Bees) Wax, Olea Europa (Olive) Oil, Citrus Aurantium (Orange) Oil, Cymbopogon Citratus (Lemongrass) Oil, Sesamun Indicum (Sesame) Oil, May contain: Titanium Dioxide, Manganese Violet, Red #6 #7,#30, Blue #1, Yellow #5, Mica, Iron Oxides  
 Net Weight: .15 Oz / 4.5g

CRUELTY FREE



MADE IN USA



*Why your brand needs this?*  
 Traditional matte lipsticks are a classic lip product that can be a great addition to any brand! Your customers will love this super pigmented and long lasting, matte finish formula.



**PACKAGING** Round Matte Tube  
 Ideal for logo printing



## Color Library

Minimum required for Color Library Shades. Please contact your Brand Consultant for more information





# Velvet Lipstick

A full-coverage semi-matte lipstick with nurturing oils and Vitamin E, leaving lips soft, smooth, and moisturized. Key ingredients: shea butter, sunflower seed oil, sesame seed oil, and lemon grass oil.

## INGREDIENTS

Helianthus Annuus (Sunflower) Seed Oil, Isostearyl Palmitate, Euphorbia Cerifera (Candelilla) Wax, Butyrospermum Parkii (Shea) Butter, Citrus Aurantium (Orange) Oil, Sesamun Indicum (Sesame) Seed Oil, Cymbopogon Citratus (Lemon Grass) Oil, Zinc Stearate, May contain: Titanium Dioxide, Ultramarines, Mica, Iron Oxides

Net Weight: .15 Oz / 4.5g

*Why your brand needs this?*  
Do you love the look of a matte lipstick, but wish they were just a little creamier? Our Velvet Lipstick collections are the perfect combination of cream and matte. Your customers will love how they glide on smoothly while still giving the lips a matte appearance.



**CRUELTY FREE**

**MADE IN USA**



**PACKAGING**

Round Matte Tube  
Ideal for logo printing

VELVETINE



PINK VELVET



BEIGE VELVET



VELVET KISS



ANTIQUÉ VELVET



VELVET LILLY



VELVET PLUM



POSH VELVET

ROYAL VELVET



ROYAL CROWN



ROYAL MAJESTY



ROYAL SCANDAL



ROYAL PRINCESS



ROYAL MAGIC



ROYAL JEWELS



ROYAL AFFAIR



VELVET CRUSH



VELVET COUTURE

## Color Library

Minimum required for Color Library Shades. Please contact your Brand Consultant for more information



VELVET TEDDY



RED VELVET



VELVET ROSE



VELVET CHIC



ROYAL FANTASY



ROYAL SAINT



ROYAL KNIGHT



ROYAL GARDEN





# Moisturizing Mineral Lipstick

*Why your brand needs this?*  
Moisturizing Mineral Lipsticks are a **MUST** for your lipstick line!  
Your customers will love the benefits of this moisturizing lipstick that's formulated with natural ingredients.

*This buttery-smooth formula is infused with minerals, natural waxes, and organic oils to boost lips hydration. Moisturizing mineral lipsticks naturally moisturize, soften, and smooth lips while remaining rich in pigment! Key ingredients: aloe vera, organic olive oil, Cupuacu seed butter, organic sweet almond oil.*

## INGREDIENTS

Organic Ricinus Communis (Castor) Seed Oil, Octyl Palmitate, Ozokerite, Hydrogenated Polycyclopentadiene, Caprylic/Capric Triglycerides, Euphorbia Cerifera (Candelilla) Wax, Synthetic Cera Alba (Bees) Wax, Organic Olea Europea (Olive) Oil, Hydrogenated Vegetable Oil, Theobroma Grandiflorum (Cupuacu) Seed Butter, Tocopheryl Acetate (Vitamin E), Organic Prunus Amygdalus Dulcis (Sweet Almond) Oil, Aloe Barbadensis Leaf Extract, Retinyl Palmitate, May Contain: Titanium Dioxide, Mica, Fluorophlogopite, Iron Oxides, Red #6, #7, Blue #1, Yellow #5, Silica, Manganese Violet

Net Weight: .15 Oz / 4.5g



## PACKAGING

Sky View Tube | Ideal for logo printing



**CRUELTY FREE**

**MADE IN USA**



SHEER BLISS



MIDNIGHT IN PARIS



SWEET AS SUGAR



SILENT MAUVIE



CUPCAKE



SUGAR DADDY



2 HOT 2 HANDLE



EXOTIC PLUM



MANIC MAUVE



I'M IN LOVE



DON'T WINE



IN VOGUE



RAZBERRY SUPREME



FORBIDDEN APPLE



# Natural Lipstick

Why your brand needs this?

New and improved clean formula infused with natural, plant-based, organic ingredients. A full-coverage lipstick with mineral colorants, nurturing oils and vitamin E, leaving lips soft, smooth, and moisturized. Key ingredients: vitamin E, shea butter, organic carnauba wax, organic castor seed oil, organic jojoba seed oil.

Your customers will love this super pigmented natural lipstick. Natural lipsticks are infused with organic and natural ingredients in a super creamy pigmented lipstick formula.

## INGREDIENTS

Organic Ricinus Communis (Castor) Seed Oil, Caprylic/Capric Triglyceride, Silica, Butyrospermum Parkii (Shea) Butter, Organic Copernicia Cerifera (Carnauba) Wax, Euphorbia Cerifera (Candelilla) Wax, Organic Persea Gratissima (Avocado) Oil, Organic Simmondsia Chinensis (Jojoba) Seed Oil, Tocopheryl Acetate (Vitamin E), May contain: Titanium Dioxide, Mica, Manganese Violet, Iron Oxides

Net Weight: .15 Oz / 4.5g



## PACKAGING

Sky View Tube  
Ideal for logo printing

CRUELTY FREE

MADE IN USA



NAKED



HONEY BUNCH



TRANQUIL



PEACHES GALORE



CALLA LILY



PASSION



PRIM & PROPER



I WANT MAUVE



BAYBERRY



CAPTIVE



## Color Library

Minimum required for Color Library Shades. Please contact your Brand Consultant for more information



BASHFUL



BERRY BLEND



AMORE



METRO





# Vanilla Bean Lipstick

Why your brand needs this?

Is your brand looking for a unique natural lipstick? Vanilla Bean Lipsticks are a great addition for your lipstick line! Your customers will love the touch of vanilla essence to these super creamy and pigmented natural lipsticks.

This soft, creamy formula is made with natural, plant-based, organic oils and waxes. Infused with the decadent flavor of vanilla and emollients to keep lips plump, smooth, and moisturized. Key ingredients: Vitamin E, shea butter, vanilla extract, organic carnauba wax, organic castor seed oil, organic sesame seed oil.

## INGREDIENTS

Organic Ricinus Communis (Castor) Seed Oil, Euphorbia Cerifera (Candelilla) Wax, Butyrospermum Parkii (Shea) Butter, Hydrogenated Vegetable Oil, Oleic/Linoleic/Linolenic Polyglycerides, Organic Copernicia Cerifera (Carnauba) Wax, Synthetic Cera Alba (Synthetic Beeswax), Organic Sesamum Indicum (Sesame) Seed Oil, Tocopheryl Acetate (Vitamin E), Prunus Dulcis (Sweet Almond) Oil, Vanilla Leaf Extract, May Contain: Titanium Dioxide, Manganese Violet, Mica, Iron Oxides

Net Weight: .15 Oz / 4.5g



CRUELTY FREE

MADE IN USA



## PACKAGING

Sky View Tube  
Ideal for logo printing



FLIRT



TRUE DESIRE



WISTERIA



TUTU



TEMPEST



WITH LOVE



MAUVE ON OVER



PLUM DIVA



OMG RED!



## Color Library

Minimum required for Color Library Shades. Please contact your Brand Consultant for more information



STARLIT



CRUSH



LUSH



# Lipglass Lipstick

*Why your brand needs this?*  
Looking to add a simple sheer and creamy lipstick to your lipstick line? Our Lipglass formula is a perfect addition to your brand!

**A sheer and shiny lipstick formula leaving lips soft, smooth, and moisturized.**

## INGREDIENTS

Ricinus Communis (Castor) Seed Oil, Isostearyl Palmitate, Propylene Glycol, Euphorbia Cerifera (Candelilla) Wax, Cera Alba (Beeswax), Copernicia Cerifera (Carnauba) Wax, Ozokerite, Cetyl Acetate, May Contain: Titanium Dioxide, Red #6, #7, #27, Blue #1, Yellow #5, #6, Mica, Iron Oxides

Net Weight: .15 Oz / 4.5g



**CRUELTY FREE**

**MADE IN USA**



## PACKAGING

Round Matte Tube | Ideal for logo printing



PINK SORBET



PINK PRINCESS



INNOCENT PINK



GOTCHA



MYSTERIOUS



WINTERBERRY



EXTREME NUDE



EARTHQUAKE



STORMY



FRAPPUCCINO



GALAXY



CATWALK



ULTIMATE SIENNA



HIGH VOLTAGE



FIRESTORM



RED FOX

## Color Library

Minimum required for Color Library Shades. Please contact your Brand Consultant for more information



TENDER



AMBER KISS



CRUSHED ROSE



DECADENT



RASPBERRY



SNOB APPEAL



TOTAL DEVOTION



TWILIGHT





# Sheer & Shine Lipstick Balm

Sheer-coverage lightweight lipstick balm that conditions and moisturizes the lips.

## INGREDIENTS

Helianthus Annuus (Sunflower) Seed Oil, Euphorbia Cerifera (Candelilla) Wax, Butyrospermum Parkii (Shea) Butter, Copernicia Cerifera (Carnauba) Wax, Cera Alba (Bees) Wax, Olea Europa (Olive) Oil, Citrus Aurantium (Orange) Oil, Cymbopogon Citratus (Lemongrass) Oil, Sesamum Indicum (Sesame) Oil, May contain: Titanium Dioxide, Manganese Violet, Red #6 #7,#30, Blue #1, Yellow #5, Mica, Iron Oxides

Net Weight: .15 Oz / 4.5g

**PACKAGING** Round Matte Tube / Ideal for logo printing



*Why your brand needs this?*  
Add something new to your lipstick line with these ultra-shine moisturizing lipsticks. Your customers will love how it helps hydrates their lips while adding the perfect pop of color!

CRUELTY FREE

MADE IN USA



REVENGE RED



PEACH FUZZ



INSPIRE



# Intense Lipstick

An intensely frosted lipstick with an ultra smooth and creamy texture.

## INGREDIENTS

Ricinus Communis (Castor) Seed Oil, Caprylic/Capric Triglyceride, Euphorbia Cerifera (Candelilla) Wax, Cera Alba (Beeswax), Copernicia Cerifera (Carnauba) Wax, Ozokerite, Cetyl Acetate, May Contain: Titanium Dioxide, Red #6, #7, #27, Blue #1, Yellow #5, #6, Mica, Iron Oxides  
Net Weight: .15 Oz / 4.5g

## PACKAGING

Round Matte Tube | Ideal for logo printing



**CRUELTY FREE**

**MADE IN USA**



INTENSE BEIGE



INTENSE APRICOT



INTENSE CORAL



INTENSE MOON GLOW



INTENSE ROSE



INTENSE EMOTION

## Color Library

Minimum required for Color Library Shades. Please contact your Brand Consultant for more information



INTENSE CRANBERRY CRUSH



INTENSE SUNSTREAK

*Why your brand needs this?*  
Your customers will fall in love with this instantly frosted lipstick formula or offer something unique for your lipstick line with our Mood lipsticks, goes on one shade and shifts to reveal your mood!

# Mood Lipstick

A mood changing lipstick that goes on sheer and color shifts to reflect your mood! Key ingredients: shea butter, sunflower seed oil, sesame seed oil, lemon grass oil.

## INGREDIENTS

Helianthus Annuus (Sunflower) Seed Oil, Euphorbia Cerifera (Candelilla) Wax, Butyrospermum Parkii (Shea Butter), Copernicia Cerifera (Carnauba) Wax, Cera Alba (Bees) Wax, Citrus Aurantium (Orange) Oil, Cymbopogon Citratus (Lemon Grass) Oil, Sesamun Indicum (Sesame) Oil, May contain: Titanium Oxide, Manganese Violet, Red #6, Blue #1, Yellow #5 & 6, Mica, Iron Oxides  
Net Weight: .15 Oz / 4.5g



**CRUELTY FREE**



**MADE IN USA**



**yellow**  
shifts to a light pink tint



**orange**  
shifts to a peachy tint



**green**  
shifts to a rosy tint







# lipgloss



**Grafton**  
PRIVATE LABEL COSMETICS



# Lipgloss

A sheer and moisturizing formula with a glossy finish. Can be worn alone or over lipstick.

**INGREDIENTS** Cocos Nucifera (Coconut) Oil, Helianthus Annuus (Sunflower) Seed Oil, Copernicia Cerifera (Carnauba) Wax, May Contain: Iron Oxides, Titanium Dioxide, Red #6, #7, #28, Yellow #5, #6, Blue #1  
Net Weight: .25 Oz / 7g

**PACKAGING** Round Clear Tube  
Ideal for logo printing



*Why your brand needs this?*  
Lipglosses are a staple item in any beauty brand!  
Our wide selection of super shiny lipgloss shades lets you choose the perfect range for your brand to offer!

**CRUELTY FREE**

**MADE IN USA**



## Color Library

Minimum required for Color Library Shades. Please contact your Brand Consultant for more information



HEATHER



NEUTRAL BERRY





# Hint of Mint Lipgloss

Why your brand needs this?

Offer a unique twist on a traditional lipgloss in your beauty brand with our Hint of Mint Lipgloss, a classic super shiny lip gloss infused with a hint of mint scent.

A sheer finish lip gloss with a hint of mint.  
Can be worn alone or over lipstick.

**INGREDIENTS** Polybutene, Hydrogenated Polyisobutene, Isostearyl Neopentanoate, Spearmint, Ascorbic Acid, Tocopheryl Acetate, Aloe Vera, May Contain: Iron Oxides, Red #6, #7, #28, Yellow #5, #6, Blue #1

Net Weight: Round Tube: .25 Oz / 7g  
Mini Tube: 0.125 Oz/3.4g

**PACKAGING** Round Tube or Mini Tube  
Ideal for logo printing



**CRUELTY FREE**



**MADE IN USA**



## Color Library

Minimum required for Color Library Shades. Please contact your Brand Consultant for more information



MINT LAVENDER LACE



MINT BLACK RASPBERRY



MINT DIVINE



# Vanilla Bean Lipgloss

*Why your brand needs this?*  
Your customers will love the touch of vanilla essence in this super shiny lipgloss formula!

*A sheer lipgloss with a hint of vanilla, infused with natural botanicals and pigments that leave lips glossy and moisturized. Key ingredients: shea butter, jojoba seed oil, aloe leaf extract, vanilla extract.*

## INGREDIENTS

Ricinus Communis (Castor) Seed Oil, Euphorbia Cerifera (Candelilla) Wax, Butyrospermum Parkii (Shea) Butter, Simmondsia Chinensis (Jojoba) Seed Oil, Aloe Barbadensis (aloe leaf extract), Roman Anthemis Nobilis (Chamomile Extract), Citrus Grandis (Grapefruit Seed), Vanilla (Planifolia Fruit) Extract. May Contain: Titanium Dioxide, Mica, Iron Oxides

Net Weight: .19 Oz / 5.5g

## PACKAGING

Leo Tube | Ideal for logo printing



**CRUELTY FREE**

**MADE IN USA**



BALLERINA



FRESH NUDE



PASSION PLUM



PLEASANT PINK



COSMOPOLITAN



ENDURING CHARM



TRUTH OR DARE



MAUVE MYSTIQUE



RUM RUNNER



## Color Library

Minimum required for Color Library Shades. Please contact your Brand Consultant for more information



BLAZING



CORAL CRUSH



CURRANT





# Mineral Mega Frost Lipgloss

An ultra frosted lipgloss infused with botanical extracts and a touch of peach scent. Key ingredients: shea butter, jojoba seed oil, and grapefruit seed extract.

## INGREDIENTS

Ricinus Communis (Castor) Seed Oil, Euphorbia Cerifera (Candelilla) Wax, Butyrospermum Parkii (Shea) Butter, Simmondsia Chinensis (Jojoba) Seed Oil, Ascorbyl Palmitate, Aloe Barbadensis, Roman Anthemis Nobilis (Chamomile) Extract, Citrus Grandis (Grapefruit) Seed Extract, Essence of Peach, May contain: Titanium Dioxide, Red #6, #7, #27, Blue #1, Yellow #5, #6, Mica, Iron Oxides

Net Weight: .19 Oz / 5.5g

## PACKAGING

Leo Tube | Ideal for logo printing



Why your brand needs this?

Your customers will love this super frosted mineral lipgloss!



CRUELTY FREE



MADE IN USA



PINK ICING



BEIGE



APRICOT



FREEZE



RUSH



BERRY



# Mineral Peppermint Stick

A refreshing peppermint lipgloss with super shine. Key ingredients: coconut oil, shea butter, jojoba seed oil, peppermint scent, and grapefruit seed extract.

## INGREDIENTS

Cocos Nucifera (Coconut) Oil, Euphorbia Cerifera (Candelilla) Wax, Butyrospermum Parkii (Shea) Butter, Simmondsia Chinensis (Jojoba) Seed Oil, Aloe Barbadensis, Roman Anthemis Nobilis (Chamomile) Extract, Citrus Grandis (Grapefruit) Seed Extract, Peppermint Flavor

Net Weight: .19 Oz / 5.5g

## PACKAGING

Leo Tube | Ideal for logo printing



CRUELTY FREE



MADE IN USA





# Mineral Diamond Lipgloss

A sheer lipgloss with flecks of glitter, infused with natural botanicals that will leave lips with an ultra shine.

Key ingredients: shea butter, jojoba seed oil, sunflower seed oil, grapefruit seed extract.

## INGREDIENTS

Helianthus Annuus (Sunflower) Seed Oil, Euphorbia Cerifera (Candelilla) Wax, Butyrospermum Parkii (Shea) Butter, Simmondsia Chinensis (Jojoba) Seed Oil, Aloe Barbadensis, Roman Anthemis Nobilis (Chamomile) Extract, Citrus Grandis (Grapefruit) Seed Extract, May Contain: Red #6, #7,#27, Mica, Iron Oxides

Net Weight: .19 Oz / 5.5g

## PACKAGING

Leo Tube | Ideal for logo printing



Why your brand needs this?

This versatile Diamond Gloss will be your customers go to lipgloss! Sheer and sparkly enough to wear alone or creates the perfect topper over any lipstick or lip pencil.

CRUELTY FREE

MADE IN USA



GODDESS



JEWEL



CINDERELLA'S CASTLE



NORTHERN LIGHTS



RUBY SLIPPER



PINK CONFECTION



GIRL'S NIGHT OUT

## Color Library

Minimum required for Color Library Shades. Please contact your Brand Consultant for more information



ENCHANTED





# Dynomint Lipgloss

Refreshing mint formula with added glitter for that extra sparkle!

**INGREDIENTS** Cocos Nucifera (Coconut) Oil, Polyisobutene, Ozokerite, Spearmint, Tocopheryl Acetate (Vitamin E), Aloe Barbadensis Leaf (Aloe Vera), May Contain: Iron Oxides, Mica, Red #6, #7, #28, Yellow #5  
Net Weight: Leo Tube: .19 Oz / 5.5g  
Mini Tube: 0.125 Oz/3.4g

**PACKAGING** Leo Tube or Mini Tube | Ideal for logo printing



**CRUELTY FREE**

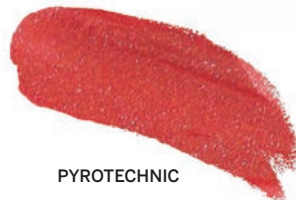
**MADE IN USA**



coming soon! FIREWORKS



SPARKLER



PYROTECHNIC



FIRECRACKER



ROMAN CANDLE



M-80



THE BOMB



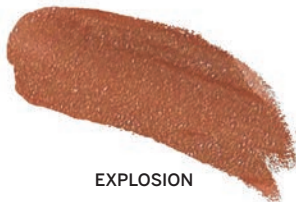
CHERRY BOMB

## Color Library

Minimum required for Color Library Shades. Please contact your Brand Consultant for more information



ROCKET



EXPLOSION

Why your brand needs this?

Your customers will love these sheer and refreshing mint-infused lipglosses!

# Doublemint Lipgloss

Two mint infused, high-shine and shimmery glosses formulated into one unique shade.

**INGREDIENTS** Cocos Nucifera (Coconut) Oil, Polyisobutene, Ozokerite, Spearmint, Tocopheryl Acetate (Vitamin E), Aloe Barbadensis Leaf (Aloe Vera), May Contain: Iron Oxides, Mica, Red #6, #7, #28, Yellow #5  
Net Weight: .25 Oz / 7g

**PACKAGING** Round Clear Tube | Ideal for logo printing



KITTEN



**CRUELTY FREE**

**MADE IN USA**



# Lip Lacquer

Enhanced with the exotic fruit, Cupuacu, this formula is moisturizing, yet highly pigmented with a glossy finish. It gives you the opaque color of a liquid lipstick without ever drying matte!

## INGREDIENTS

Ricinus Communis (Castor Seed) Oil, Olea Europea (Olive) Oil, Isostearyl Palmitate, Cera Alba (Bees) Wax, Stearalkonium Hectorite, Silica Silylate, Theobroma Grandiflorum (Cupuacu Seed) Butter, Hydrogenated Polycyclopentadiene, Caprylic/Capric Triglyceride, May Contain: Red #7,#28, Yellow #6, Titanium Dioxide, Mica, Iron Oxide, Silica, Manganese Violet

Net Weight: .19 Oz / 5.5g

## PACKAGING

Leo Tube | Ideal for logo printing



*Why your brand needs this?*  
Is your brand looking for a super pigmented full coverage lippgloss? Then our Lip Lacquer is a MUST for your brand!

CRUELTY FREE



MADE IN USA



POUT



BOCA BABE



TAKE ME OUT



PIN UP



PARTY GIRL



FIERCELY FABULOUS



DANCE ALL NIGHT



WHAT LOLITA WANTS



ALOHA



CHERRY ON TOP

## Color Library

Minimum required for Color Library Shades. Please contact your Brand Consultant for more information



MALTED

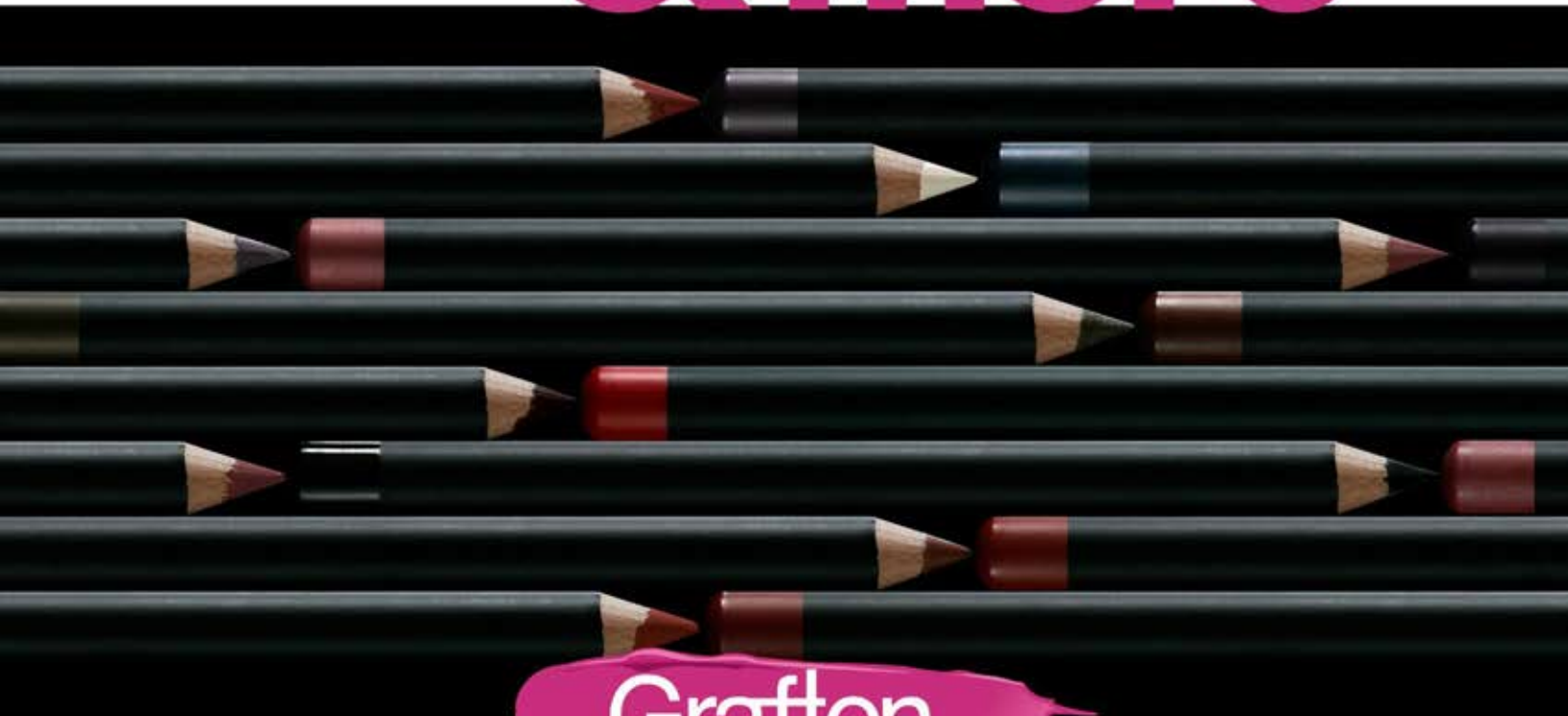


AFFECTION





# lip pencils & more



**Grafton**  
PRIVATE LABEL COSMETICS



# Mineral Lip Crayons & Lip Pencils



*Why your brand needs this?*  
Perfect add-on product to any lipstick or lipgloss line!  
Lip liners help to define lips and keep lipstick from feathering or fading!

## MINERAL LIP CRAYONS

*A mineral wooden pencil made with plant-based oils & waxes, natural mineral colorants, and vitamin E for a rich and creamy consistency.*

### INGREDIENTS

Coconut (Cocos Nucifera) Oil, Helianthus Annuus (Sunflower) Seed Oil, Cera Alba (Bees) Wax, Copernicia Cerifera (Carnauba) Wax, Rhus Succedanea (Fruit) Wax, Tocopheryl Acetate, May Contain: Titanium Dioxide, Mica, Red #7, #28, #30, Yellow #6, Iron Oxides  
Net Weight: .04 oz/1g

**CRUELTY FREE**

**MADE IN USA**



ANTIQUE ROSE



BOYSENBERRY



NEUTRAL



TENDER

## LIP PENCILS



*A classic wooden pencil made with vitamin E for a rich and creamy consistency.*

### INGREDIENTS

Helianthus Annuus (Sunflower) Seed Oil, Cocos Nucifera (Coconut) Oil, Cera Alba (Beeswax), Copernicia Cerifera (Carnauba) Wax, Rhus Succendanea Fruit Wax, Tocopheryl Acetate, May Contain: Titanium Dioxide, Iron Oxides, Mica, Red #7, #28, #30, Yellow #6  
Net Weight: .035 Oz/1g

**CRUELTY FREE**

**MADE IN USA**



BERRY PRETTY



COGNAC



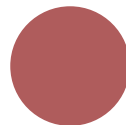
CORAL KISS



CURRY



EGGPLANT



FLESH



MALTED MAUVE



MOONLIT MAUVE



PASSION



PINK LADY



RETRO RED



ROSEBERRY



ROSEWOOD





# 2 in 1 Cream Blush & Lip Tint

Why your brand needs this?

Looking for a versatile item for your brand? Our 2 in 1 Cream Blush/Lip Tint is something your customers must have! One quick swipe for a tinted lip or ultra-glowing cheek.

A versatile cheek and lip tint that glides on and glows. Infused with moisturizing plant oils: shea butter, olive oil, jojoba seed oil, and anti-inflammatory myrrh oil.

## INGREDIENTS

Caprylic/Capric Triglyceride, Mica, Ethylhexyl Palmitate, Ricinus Communis (Castor Oil), Ceresin, Phenyl Trimethicone, Microcrystalline Wax, Aluminum Starch Octenylsuccinate, Titanium Dioxide, Beeswax, Sorbitan Sesquioleate, Oleic Acid, Tocopheryl Acetate, Ethylene Brassylate, BHT, May Contain: Iron Oxides, Manganese Violet, Red 6 Lake, Red 7 Lake, Red 40 Lake, Yellow 6 Lake, Talc

Net Weight: .11 Oz/3.3g

## PACKAGING OPTIONS



Pan only in clam shell, or can be assembled in palettes



Matte View Compact  
Ideal for logo printing



CRUELTY FREE

MADE IN USA



CORAL MIST



FELICITY



GLORIOUS



HARMONY



OASIS



SWEPT AWAY



TOTALLY SHY



PINK ESCAPE



NEUTRAL



DARING



BRONZE GLOW